



CONSTRUCTION ALERT-041

Upcoming Construction Activities **Temporary closure of Western Blvd. entrance**

- **Entrance closure**

The Western Blvd. entrance onto the campus will be closed from 3:00 AM, Friday, June 15th through August 31st.

- **Impact:** The only entrances onto the campus will be on Imperial Hwy. – at Imperial Hwy and Denker Ave. and at Imperial and Southwest Drive. Please see attached map.



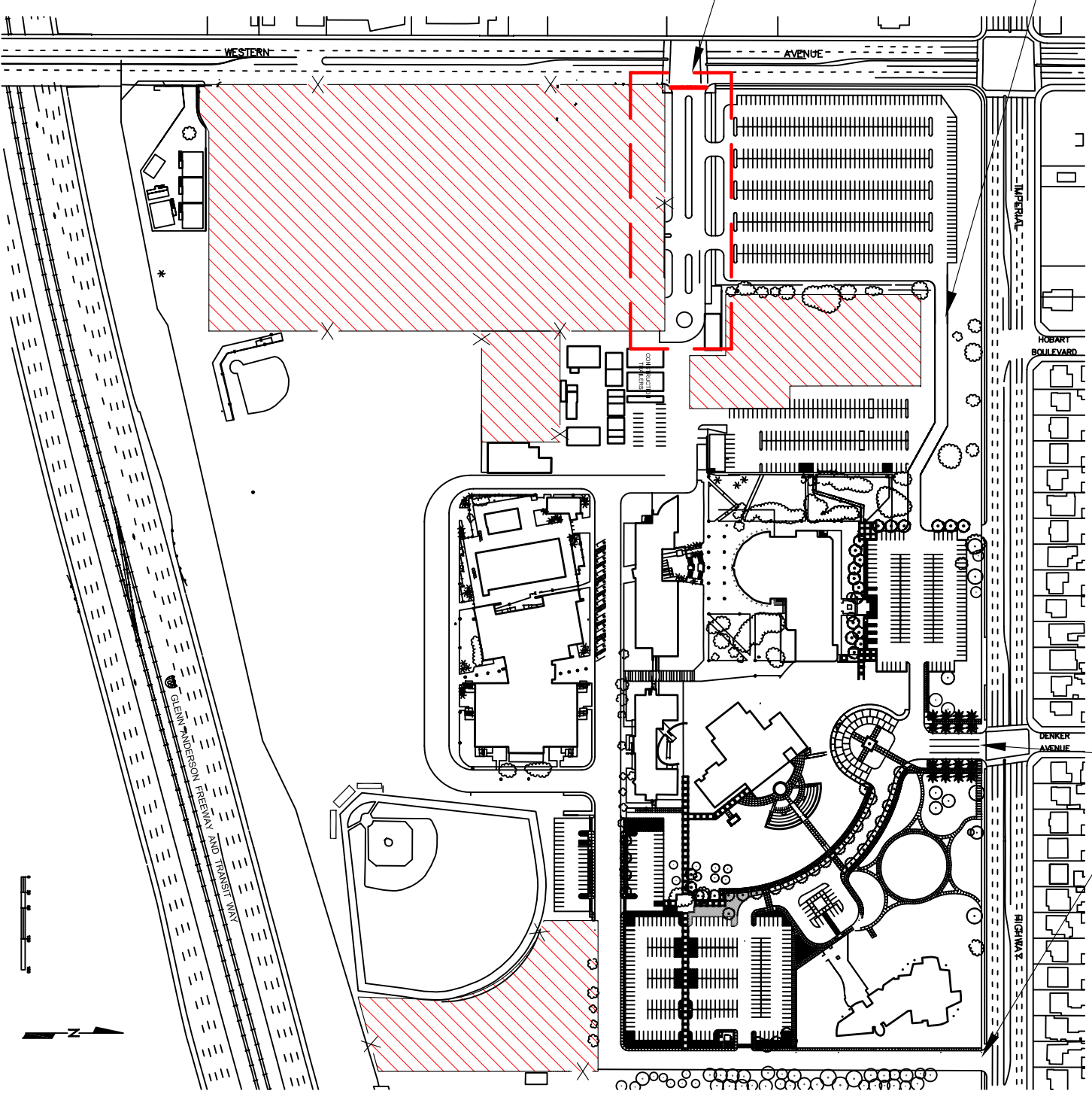
CONNECTOR ROAD TO
PARKING LOT # 3

MAIN ENTRANCE DURING CONSTRUCTION
JUNE 15TH THROUGH AUGUST 31ST

ENLARGED

TURNAROUND TO BE INSTALLED BY
DESIGN-BUILD CONTRACTOR

**WESTERN ENTRANCE TO BE CLOSED JUNE
15TH THROUGH AUGUST 31ST.
PEDESTRIAN ACCESS ONLY**



 — AREAS TO BE UNDER
CONSTRUCTION IN FALL
OF 2007

CAMPUS MAP - FALL 2007