

SPRING

HOW TO READ THE SCHEDULE OF CLASSES

TRANSFERABILITY
 UC - Acceptable for credit, Univ. of Calif.
 CSU - Acceptable for credit, Calif. State Univ.
 NDA - Non Degree Applicable
 CAN - Course Articulation Number of UC's and CSU's

COURSE NAME	COURSE NUMBER	COURSE TITLE			UNITS	
Complete prerequisite classes before enrolling in this class		ACCOUNTING 22 - BOOKKEEPING AND ACCOUNTING II (UC:CSU) 3 UNITS			BUILDING	
		Prerequisite: Accounting 21 or equivalent. Note: Together with Accounting 21			ROOM NUMBER	
		Equals Accounting 1				
		Day Classes				
	8003	8:00-9:20	TTh	STAFF	LL204	
	8004	9:00-2:05	SAT	STAFF	LL202	
		Evening Classes				
SECTION OR TICKET NUMBER	5000	6:30-9:05	MW	STAFF	LL206	EVENING CLASSES In Bold Print
	5002	7:00-9:25	TTh	STAFF	LL204	
	8006	9:30-10:30	MTWTh	STAFF	LL206	
TIME CLASS MEETS (TBA = to be arranged)		(Starts 01/02/2007, Ends 02/02/2007)				INSTRUCTOR
	DAYS CLASS MEETS (DAILY = M,T,W,TH,F)			SHORT TERM CLASSES (Start & end dates in parentheses)		

ACCOUNTING

Department Chair: Carolyn Magee,
 (323) 241-5337,
Businesslasc@yahoo.com

ACCOUNTING 1 - INTRODUCTORY ACCOUNTING I (UC:CSU) - 5 UNITS

Prerequisite: None. Recommended: Business 38.
 0600 9:35-12:05 MW
 STAFF LL205

Evening Class

3610 6:30-9:00 TTh
 B.R BRUMELL LL205

ACCOUNTING 2 - INTRODUCTORY ACCOUNTING II (UC:CSU) - 5 UNITS

Prerequisite: Accounting 1

Evening Class

3611 6:30-9:00 MW
 N L BONNER LL205

ADMINISTRATION OF JUSTICE

Department Chair: Sandra Lee,
 (323) 241-5224, Lees@lasc.edu

INTRODUCTION TO ADMINISTRATION OF JUSTICE (UC:CSU) - 3 UNITS

Prerequisite: None

0608 8:00-9:25 MW
 STAFF LL214
 0609 11:10-12:35 TTh
 A REED LL214

Evening Classes

3620 6:30-9:40 MW
 M L LEWIS LL215
(8 Week Class - Starts 4/7/2008, Ends 5/30/2008)

ADMINISTRATION OF JUSTICE 2 - CONCEPTS OF CRIMINAL LAW (UC:CSU) - 3 UNITS

Recommended: Administration of Justice 1

Evening Classes

3622 6:30-9:40 MW
 A REED LL214
(8 Week Class - Starts 2/14/2008, Ends 4/04/2008)

ADMINISTRATION OF JUSTICE 3 - LEGAL ASPECTS OF EVIDENCE (CSU) - 3 UNITS

Prerequisite: Administration of Justice 1 and 2

Evening Classes

3624 6:30-9:40 TTh
 STAFF LL214
(8 Week Class - Starts 4/7/2008, Ends 5/30/2008)

ADMINISTRATION OF JUSTICE 1 - *(Cont'd)*

**ADMINISTRATION OF JUSTICE 4 -
PRINCIPLES AND PROCEDURES OF THE
JUSTICE SYSTEM (UC:CSU) - 3 UNITS**

0610	9:35-11:00	TTh
	A REED	LL214

**ADMINISTRATION OF JUSTICE 5 -
CRIMINAL INVESTIGATION (CSU) - 3
UNITS**

Prerequisite: Administration of Justice 3

0612	8:00-9:25	TTh
	A REED	LL214

**ADMINISTRATION OF JUSTICE 6 -
PATROL PROCEDURES (CSU) - 3 UNITS**

Recommended: Administration of Justice 1

Evening Classes

3625	6:30-9:40	TTh
	A REED	LL214

(8 Week Class - Starts 2/4/2008, Ends 4/04/2008)

**ADMINISTRATION OF JUSTICE 14 -
REPORT WRITING FOR PEACE OFFICERS
(CSU) - 3 UNITS**

Recommended: Administration of Justice 1

0615	8:00-11:10	S
	A L CAMPBELL	LL214

**ADMINISTRATION OF JUSTICE 62 -
FINGERPRINT CLASSIFICATION (CSU) - 3
UNITS**

Recommended: Administration of Justice 1

0614	11:20-2:30	S
	J W HEARN	LL102

**ADMINISTRATION OF JUSTICE 73 - LAW
AND MINORITY GROUPS (CSU) - 3 UNITS**

Prerequisite: None

0617	9:35-11:00	MW
	A REED	LL214

**ADMINISTRATION OF JUSTICE 75 -
INTRODUCTION TO CORRECTIONS (CSU) -
3 UNITS**

Prerequisite: None. Recommended: Administration of Justice 1

Evening Classes

3626	6:30-9:40	M
	C E BARLOW	LL214

**ADMINISTRATION OF JUSTICE 185 -
DIRECTED STUDY - ADMINISTRATION OF
JUSTICE (CSU) - 1 UNIT**

Prerequisite: None. Note: Enrollment by add card only. Contact A. Reed in LL214 or phone (323) 242-5504. First class meeting: Saturday, February 9, 2008 at 3:00 p.m.

0611	1:15 hrs/wk	TBA
	A REED	LL214

**ADMINISTRATION OF JUSTICE 285 -
DIRECTED STUDY - ADMINISTRATION OF
JUSTICE (CSU) - 2 UNITS**

Prerequisite: None. Note: Enrollment by add card only. Contact A. Reed in LL214 or phone (323) 242-5504. First class meeting: Saturday, February 9, 2008 at 3:00 p.m.

0620	2:05 hrs/wk	TBA
	A REED	LL214

AMERICAN SIGN LANGUAGE

**Department Chair: Sandra Lee,
(323) 241-5224, Lees@lasc.edu**

**AMERICAN SIGN LANGUAGE 1 -
AMERICAN SIGN LANGUAGE I (UC:CSU) -
4 UNITS**

Prerequisite: None

Evening Classes

3400	5:30-7:35	MW
	A CORNEAL	LL108

**AMERICAN SIGN LANGUAGE 2 -
AMERICAN SIGN LANGUAGE II (UC:CSU)-
4 UNITS**

Prerequisite: American Sign Language I

Evening Classes

3401	5:30-9:45	Th
	H J WARD	LL110



ANATOMY

Department Chair: Glenn Yoshida,
(323) 241-5296, Yoshidgy@lasc.edu

ANATOMY 1 - INTRODUCTION TO HUMAN ANATOMY (UC:CSU) - 4 UNITS

Prerequisite: None (Lecture 3 hours; Lab, 3 hours)

1511	lec	8:00-11:10	S
		R RESENDIZ	LL305
	& lab	11:20-2:30	S
		R RESENDIZ	LL306
1510	lec	11:30-2:40	T
		S S VERITY	LL303
	& lab	11:30-2:40	Th
		S S VERITY	LL302

Evening Classes

4510	lec	6:30-9:40	Th
		B D OLSEN	LL105
	& lab	6:30-9:40	T
		H ELFARISSI	LL302
4511	lec	6:30-9:40	Th
		B D OLSEN	LL105
	& lab	6:30-9:40	W
		H ELFARISSI	LL302

ANTHROPOLOGY

Department Chair: Sandra Lee,
(323) 241-5224, Lees@lasc.edu

ANTHROPOLOGY 101 - HUMAN BIOLOGICAL EVOLUTION (UC:CSU) - 3 UNITS

Prerequisite: None

0415		8:00 -9:25	TTh
		M W WALKER	LL104
0416		9:35 -11:00	MW
		M W WALKER	LL118

Evening Classes

3411		6:30 -9:40	W
		S MORLEY	SS314

ANTHROPOLOGY 102 - HUMAN WAYS OF LIFE: CULTURAL ANTHROPOLOGY (UC:CSU) - 3 UNITS

Prerequisite: None

0419		9:35-11:00	TTh
		M W WALKER	SS314

ART

Department Chair: Patricia Lewis,
(323) 241-5352, Lewispa@lasc.edu

ART 101 - SURVEY OF ART HISTORY I (UC:CSU) - 3 UNITS

Prerequisite: None. Recommended: English 28

0112		2:00-3:25	MW
		L EVANS	LL104

ART 104 – ART APPRECIATION II (UC:CSU) - 3 UNITS

Prerequisite: None. Recommended: English 28

0127		9:35-11:00	TTh
		R EOFF	LL213

ART 201 - DRAWING I (UC:CSU) - 3 UNITS

Prerequisite: None. Lecture 2 hours, Lab (Studio) 2 hours

8002	lec	11:10- 1:15	T
		R VANCE	TEC315
	& lab	11:10- 1:15	Th
		R VANCE	TEC315

Evening Classes

5000	lec	4:15- 6:15	M
		R VANCE	TEC315
	& lab	4:15- 6:15	W
		R VANCE	TEC315

ART 202 - DRAWING II (UC:CSU) - 3 UNITS

Prerequisite: Art 201. Lecture 2 hours; Lab (studio), 2 hours with homework.

8003	lec	11:10- 1:15	T
		R VANCE	TEC315
	& lab	11:10- 1:15	Th
		R VANCE	TEC315

Evening Classes

5001	lec	4:15- 6:15	M
		R VANCE	TEC315
	& lab	4:15- 6:15	W
		R VANCE	TEC315

ART 300 - INTRODUCTION TO PAINTING (UC:CSU) - 3 UNITS

Prerequisite: None. Lecture 2 hours; Lab (studio), 2 hours.

8004	lec	1:15- 3:20	T
		R VANCE	TEC315
	& lab	1:15- 3:20	Th
		R VANCE	TEC315

ART 307 - OIL PAINTING I (UC:CSU) - 3 UNITS

Prerequisite: None. Lecture, 1 hour; Lab (studio), 5 hours.

8005	lec	1:15 - 2:15	T
		R VANCE	TEC315
	& lab	5:20 hrs/wk	TBA
		R VANCE	TEC315

ART 308 - OIL PAINTING II (UC:CSU) - 3 UNITS

Prerequisite: Art 307. Lec 1 hour, Lab (Studio) 5 hours.

8006	lec	1:15 - 2:15	T
		R VANCE	TEC315
	& lab	5:20 hrs/wk	TBA
		R VANCE	TEC315

ART 309 - OIL PAINTING III (UC:CSU) - 3 UNITS

Prerequisite: Art 308. Lec 1 hour, Lab (Studio) 5 hours.

8007	lec	1:15 - 2:15	T
		R VANCE	TEC315
	& lab	5:20 hrs/wk	TBA
		R VANCE	TEC315

BIOLOGY

Department Chair: Glenn Yoshida,
(323) 241-5296, Yoshidgy@lasc.edu

WHICH BIOLOGY COURSE IS FOR YOU? If you are a FOUR-YEAR BIOLOGICAL SCIENCE MAJOR (in biology, pre-medical, or pre-pharmacy), take Biology 6 and 7. Those majoring in PRE-NURSING, PRE-DENTAL HYGIENE, PRE-CHIROPRACTIC, PSYCHOLOGY, SPEECH THERAPY, AND PRE-PHYSIOTHERAPY, take Biology 20 or Anatomy 1 and Physiology 1. Biology 3 fulfills a general education requirement

BIOLOGY 3 - INTRODUCTION TO BIOLOGY (UC:CSU) - 4 UNITS

Prerequisite: None. (Lecture 3 hours; Lab, 3 hours).

1520	lec	9:35-12:45	M
		T J ROBERTS	LL303
	& lab	9:35-12:45	W
		T J ROBERTS	LL302
1521	lec	8:00-11:10	S
		M NAGAYA	LL105
	& lab	11:20- 2:30	S
		H H NAQVI	LL302
1522	lec	3:15 hrs/wk	TBA
		K KIM	ONLINE
	& lab	11:10-2:20	M
		K KIM	LL302

(Cont'd)

BIOLOGY 3 (Cont'd)

1523	lec	9:35-12:45	M
		R RESENDIZ	LL306
	& lab	9:35-12:45	W
		STAFF	LL306

Evening Classes

4520	lec	6:30-9:40	T
		H H NAQVI	LL103
	& lab	6:30-9:40	Th
		H H NAQVI	LL302
4521	lec	6:30-9:40	T
		H H NAQVI	LL103
	& lab	6:30-9:40	Th
		H ELFARISSI	LL306

Honors Program

1520	lec	9:35-12:45	M
		T J ROBERTS	LL303
	& lab	9:35-12:45	W
		T J ROBERTS	LL302

BIOLOGY 7 - GENERAL BIOLOGY II (UC:CSU) - 5 UNITS

Prerequisite: Math 125. Lecture 3 hours; Lab, 6 hours.

1524	lec	8:00- 9:25	TTh
		K KIM	LL402
	& lab	9:35-12:45	TTh
		K KIM	LL413

BIOLOGY 20 - HUMAN ANATOMY AND PHYSIOLOGY (UC:CSU) - 8 UNITS

Prerequisite: Biology 3 or Biology 5 (Lecture 6, Lab, 6 hours).

1525	lec	8:00-11:00	MW
		K KIM	LL402
	& lab	8:00-11:00	TTh
		G Y YOSHIDA	LL302

BIOLOGY 285 - DIRECTED STUDY - BIOLOGY (UC:CSU) - 2 UNITS

1527		2:05 hrs/wk	TBA-
		T J ROBERTS	LL303



BUSINESS

Department Chair: Carolyn Magee,
(323) 241-5337,
Businesslasc@yahoo.com

BUSINESS 1 - INTRODUCTION TO BUSINESS (UC:CSU) - 3 UNITS

Prerequisite: None

0700	8:00-9:25	MW
	J A MRAVA	LL203
0704	11:10-12:35	MW
	J A MRAVA	LL203

Evening Classes

3469	6:30-9:40	T
	J T DUDLEY	COX302

BUSINESS 5 - BUSINESS LAW I (UC:CSU) - 3 UNITS

Prerequisite: None

0702	9:35-11:00	TTh
	J A MRAVA	LL203

Evening Classes

3752	6:30 -9:40	MW
	N TOURE	LL203

(8 Week Class - Starts 2/4/2008, Ends 4/04/2008)

BUSINESS 6 - BUSINESS LAW II (UC:CSU) - 3 UNITS

Prerequisite: Business 5. (NEXT OFFERED SPRING 2009)

Evening Classes

3749	6:30-9:40	MW
	N TOURE	LL203

(8 Week Class - Starts 4/07/2008, Ends 5/30/2008)

CHEMISTRY

Department Chair: Glenn Yoshida,
(323) 241-5296, Yoshidgy@lasc.edu

CHEMISTRY 51 - FUNDAMENTALS OF CHEMISTRY I (UC:CSU) - 5 UNITS

Recommended: Math 115 or concurrent enrollment (Lecture 4 hours, Lab, 3 hours).

1533	8:00-10:05	TTh
	C TILLMAN	LL403
& lab	10:10-1:20	Th
	C TILLMAN	LL405

Evening Classes

4530	lec	6:30-8:35	TW
		STAFF	LL403
& lab		6:30-9:40	Th
		STAFF	LL405

CHEMISTRY 101 - GENERAL CHEMISTRY I (UC:CSU) - 5 UNITS

Prerequisite: Chemistry 51 and Math 125 (Lecture 3 hours, Lab 6).

1530	lec	11:10-12:35	MW
		C TILLMAN	LL403
& lab		1:10-4:20	MW
		C TILLMAN	LL405

CHEMISTRY 212 - ORGANIC CHEMISTRY FOR SCIENCE MAJORS II (UC:CSU) - 5 UNITS

Prerequisite: Chemistry 211 (Lecture 3 hours; Lab, 6 hours).

1534	lec	8:00-9:25	MW
		P TOURE	LL403
& lab		9:35-12:45	MW
		P TOURE	LL405

CHILD DEVELOPMENT

Department Chair: Kathi Cliff,
(323) 241-5000, Cliffc@lasc.edu

CHILD DEVELOPMENT 1 - CHILD GROWTH AND DEVELOPMENT (UC:CSU) - 3 UNITS

Prerequisite: English 21 and Verification of annual Tuberculosis Test.

0420	9:35-11:00	MW
	STAFF	CD218

Evening Classes

3420	6:30-9:40	W
	P P ITOW	CD214

CHILD DEVELOPMENT 2 - EARLY CHILDHOOD: PRINCIPLES AND PRACTICES (CSU) - 3 UNITS

Prerequisite: Verification of annual Tuberculosis Test. Co-requisite: Child Development 1 and English 28 or previous enrollment. Note: All students must bring a copy of their transcript or registration printout to the first day of class showing proof of co-enrollment in English 28 or previous completion with a "C" or better.

0421	11:10-12:35	MW
	L L BRINSON	CD217

Evening Classes

3421	6:30-9:40	T
	A RHODES	CD217

CHILD DEVELOPMENT 3 - CREATIVE EXPERIENCES FOR CHILDREN I (CSU) - 3 UNITS

Prerequisite: Child Development 2 and verification of annual Tuberculosis Test. MATERIALS FEE \$15. PLEASE PAY AT BUSINESS OFFICE, BRING RECEIPT THE FIRST DAY OF CLASS.

Evening Classes

3422	6:30-9:40	W	
	STAFF		CD217

CHILD DEVELOPMENT 4 - CREATIVE EXPERIENCES FOR CHILDREN II (CSU) - 3 UNITS

Prerequisite: Child Development 2; verification of annual Tuberculosis Test. MATERIALS FEE: \$15. PLEASE PAY IN BUSINESS OFFICE, BRING RECEIPT THE FIRST DAY OF CLASS.

0432	8:00-11:10	S	
	STAFF		CD217

Evening Classes

3431	6:30-9:40	M	
	L L BRINSON		CD217

CHILD DEVELOPMENT 10 - CHILD HEALTH (CSU) - 3 UNITS

Prerequisite: Child Development 2; verification of annual Tuberculosis Test.

0423	11:10-12:35	TTh	
	A RHODES		CD217

Evening Classes

3424	6:30-9:40	Th	
	A RHODES		CD214

CHILD DEVELOPMENT 11 - HOME, SCHOOL, AND COMMUNITY RELATIONS (CSU) - 3 UNITS

Prerequisite: None

0425	11:10-12:35	MW	
	A RHODES		CD214

Evening Classes

3425	6:30-9:40	M	
	A RHODES		CD214

CHILD DEVELOPMENT 12 - PARENT-TEACHER-CHILD INTERACTION (CSU) - 3 UNITS

Prerequisite: None.

0426	9:35-11:00	MW	
	A RHODES		CD214

CHILD DEVELOPMENT 22 - PRACTICUM IN CHILD DEVELOPMENT I (CSU) - 4 UNITS

Prerequisite: Child Development 3 and 4; verification of annual Tuberculosis Test. Note: In addition to the lecture class, students are required to complete a minimum of 90 hours at an approved field site. To be eligible for field placement, students must be available two days a week for 6 1/2 hours TBA.

0427	lec	1:10-3:15	Th
		L L BRINSON	CD217
	& lab	6:30 hrs/wk	TBA
		L L BRINSON	FIELD

Evening Classes

3426	lec	6:30-8:35	Th
		L L BRINSON	CD217
	& lab	6:30 hrs/wk	TBA
		R E WILLIAMS	FIELD

CHILD DEVELOPMENT 31 - INFANT AND TODDLER STUDIES II (CSU) - 3 UNITS

Prerequisite: Verification of annual Tuberculosis Test. Recommended: English 21.

0428	8:00-9:25	MW	
	L L BRINSON		CD217

Evening Classes

3427	6:30-9:40	T	
	STAFF		CD228

CHILD DEVELOPMENT 34 - OBSERVING AND RECORDING CHILDREN'S BEHAVIOR (CSU) - 3 UNITS

Prerequisite: Child Development 1 and TB test verification. Recommended: English 28 and concurrent enrollment in Child Development 22.

Evening Classes

3428	6:30-9:40	M	
	P P ITOW		CD218

CHILD DEVELOPMENT 39 - ADMINISTRATION & SUPERVISION OF EARLY CHILDHOOD PROG II (CSU) - 3 UNITS

Prerequisite: Child Development 1 and Child Development 2. Recommended: Child Development 11.

0429	11:10-2:10	S	
	STAFF		CD218

CHILD DEVELOPMENT 42 - THE CHILD IN A DIVERSE SOCIETY (CSU) - 3 UNITS

Prerequisite: None

Evening Classes

3429	6:30-9:40	T	
	STAFF		CD214

SPRING ■ 2008

SCHEDULE OF CLASSES

CHILD DEVELOPMENT 44 - PROGRAMS FOR CHILDREN WITH SPECIAL NEEDS I (CSU) - 3 UNITS

Prerequisite: Verification of annual Tuberculosis Test. Recommended: English 21. Note: Needed for specialization units.

0430	8:00-11:00	S
	STAFF	CD214

CHILD DEVELOPMENT 47 - SCHOOL AGE PROGRAMS (CSU) - 3 UNITS

Prerequisite: Verification of annual Tuberculosis Test. Recommended: English 21. Note: Needed for specialization units.

Evening Classes

3430	6:30-9:40	W
	STAFF	CD228

CHILD DEVELOPMENT 65 - ADULT SUPERVISION/EARLY CHILDHOOD MENTORING - 2 UNITS

Prerequisite: Verification of annual Tuberculosis Test. Recommended: English 21.

0446	11:10-1:25	S
	STAFF	CD218

CHILD DEVELOPMENT 172 - INTRODUCTION TO CAREERS IN CHILD DEVELOPMENT - 1 UNIT

0447	9:35-10:30	T
	L L BRINSON	CD214

COMPUTER APPLICATIONS OFFICE TECHNOLOGY

Department Chair: Carolyn Magee,
(323) 241-5337,
Businesslasc@yahoo.com

COMPUTER APPLICATIONS OFFICE TECHNOLOGY 1 - COMPUTER KEYBOARDING I - 3 UNITS

Prerequisite: None (Lecture 2 hours, Lab, 3 hours). Laboratory fees: \$10

8176	lec	8:00-9:05	MW
		J D PERRET	LL202
	& lab	9:05-10:30	MW
		J D PERRET	LL202

8173	lec	9:35-10:40	TTh
		C L MAGEE	LL206
	& lab	10:40-12:05	TTh
		C L MAGEE	LL206
8900	lec	9:35-10:40	TTh
		C L MAGEE	LL206
	& lab	10:40-12:05	TTh
		C L MAGEE	LL206

Evening Classes

5081	lec	6:30-7:35	MW
		E R GLAZE	LL208
	& lab	7:35-9:00	MW
		E R GLAZE	LL208

COMPUTER APPLICATIONS OFFICE TECHNOLOGY 2 - COMPUTER KEYBOARDING II (CSU) - 3 UNITS

Prerequisite: CAOT 1 (Lecture 2 hours; Lab, 3 hours). Laboratory Fees: \$10.00

8177	lec	8:00-9:05	MW
		J D PERRET	LL202
	& lab	9:05-10:30	MW
		J D PERRET	LL202
8174	lec	9:35-10:40	TTh
		C L MAGEE	LL206
	& lab	10:40-12:05	TTh
		C L MAGEE	LL206

Evening Classes

5082	lec	6:30-7:35	MW
		E R GLAZE	LL208
	& lab	7:35-9:00	MW
		E R GLAZE	LL208

COMPUTER APPLICATIONS OFFICE TECHNOLOGY 3 - COMPUTER KEYBOARDING III (CSU) - 3 UNITS

Prerequisite: CAOT 2 (Lecture 2 hours, Lab, 3 hours). Laboratory Fees \$10.00

Evening Classes

5083	lec	6:30-7:35	MW
		E R GLAZE	LL208
	& lab	7:35-9:00	MW
		E R GLAZE	LL208

COMPUTER APPLICATIONS OFFICE TECHNOLOGY 32 - BUSINESS COMMUNICATIONS (CSU) - 3 UNITS

Prerequisite: None. NEXT OFFERED SPRING 2009

Evening Classes

3825		6:30-9:40	TTh
		E A ALBERTSON	LL214

(8 Week Class - Starts 4/7/2008, Ends 5/30/2008)

**COMPUTER APPLICATIONS OFFICE
TECHNOLOGY 64 - OFFICE
ADMINISTRATION LABORATORY
(CR/NCR) - 1 UNIT**

Prerequisite: None. Laboratory Fees: \$10
0849 2 hrs/wk TBA TBA
 C L MAGEE LL208

Online Class: Online orientation to be held on campus, Thursday, February 7, 2008 at 12:30 p.m in LL206. Please contact instructor at (323) 241-5337.

**COMPUTER APPLICATIONS OFFICE
TECHNOLOGY 82 - MICROCOMPUTER
SOFTWARE SURVEY IN THE OFFICE (CSU)
- 3 UNITS**

Prerequisite: None. (Lecture 2 hours, Lab, 3 hours) (Laboratory Fees: \$10). Next Face-to-Face Winter/spring 2009

0841 lab 5:25 hrs/wk TBA
 J D PERRET LL206

Online Class: Online orientation to be held on campus, Saturday, February 9, 2008 at 8:00 a.m. to 10:00 a.m. in LL202. Please contact instructor at: Perretjd@lasc.edu.

**COMPUTER APPLICATIONS OFFICE
TECHNOLOGY 84 - MICROCOMPUTER
OFFICE APPLICATIONS: WORD
PROCESSING (CSU) (RPT 2) - 3 UNITS**

Prerequisite: CAOT 1D or 1.

0842 lab 5:20 hrs/wk TBA
 O VALDIVIA LL206

Online Class: Online orientation to be held on campus, Saturday, February 9, 2008 at 10:00 a.m. to 12:00 p.m in LL206.

**COMPUTER APPLICATIONS OFFICE
TECHNOLOGY 85 - MICROCOMPUTER
OFFICE APPLICATIONS: SPREADSHEET
(CSU) - 3 UNITS**

Prerequisite: None. Lecture 1 hour: Lab, 4 hours with homework.

Evening Classes

3832 lec 6:30-7:00 TTh
 F I ANEBERE LL202
 & lab 7:05-9:10 TTh
 F I ANEBERE LL202
3831 lab 5:25 hrs/wk TBA
 J D PERRET LL202

Online Class: Online orientation to be held on campus, Saturday, February 9, 2008 at 10:00 a.m. in LL202. Please contact instructor at (323) 241-5337.

**COMPUTER APPLICATIONS OFFICE
TECHNOLOGY 99V - HOW TO SUCCEED
IN AN ONLINE COURSE - 1 UNITS**

0843 2:30-4:50 MW
 J D PERRET LL 202

(8 Week Class - Starts 4/7/2008, Ends 5/30/2008)

COMPUTER SCIENCE- INFORMATION TECHNOLOGY

**Department Chair: Carolyn Magee,
(323) 241-5337,
Businesslasc@yahoo.com**

**COMPUTER SCIENCE-INFORMATION
TECHNOLOGY 601 - INTRODUCTION TO
COMPUTERS AND THEIR USES (UC:CSU) -
3 UNITS**

Prerequisite: None

0660		8:00-9:25	MW
		M HAGHGOO	TEC270
0664		8:00-9:25	MW
		STAFF	TEC290
0661		8:00-9:25	TTh
		M HAGHGOO	TEC270
0668		9:35-11:00	MW
		STAFF	TEC270
0662		9:35-11:00	MW
		J E HICKS	TEC290
0663		9:35-11:00	TTh
		M HAGHGOO	TEC270
0665		11:10-12:35	TTh
		M HAGHGOO	TEC270
0666		11:30-2:40	S
		M PATEL	TEC270
0667		1:00-2:25	MW
		M HAGHGOO	TEC270
6508	lec	5:55-7:30	T
		STAFF	TEC290
	& lec	8:00-11:30	S
		STAFF	TEC290
	& lab	2:00 hrs/wk	TBA
		STAFF	TEC290

Evening Classes

3702 6:30-9:40 W
 S A FOREMAN TEC270
 ASBERRY
3703 6:30-9:40 Th
 A A AYETIN TEC270

COMPUTER SCIENCE-INFORMATION TECHNOLOGY 630 - MICROCOMPUTER APPLICATION SOFTWARE (UC:CSU) - 3 UNITS

Prerequisite: Computer Science 601 (Lecture 2 hours; Lab, 2 hours).

0675	lec	9:35-11:00	TTh
		J E HICKS	TEC290
	& lab	1:05 hrs/wk	TBA
		J E HICKS	TEC290

COMPUTER SCIENCE-INFORMATION TECHNOLOGY 639 - PROGRAMMING IN "C" LANGUAGE (UC:CSU) - 3 UNITS

Prerequisite: Computer Science and Information Technology 602 (Lecture 3 hours; Lab 2 hours).

0672	lec	11:10-12:15	MW
		J E HICKS	TEC290
	& lab	12:15-1:20	MW
		J E HICKS	TEC290

COMPUTER SCIENCE-INFORMATION TECHNOLOGY 660 - BUSINESS SYSTEMS DESIGN (CSU) - 3 UNITS

Prerequisite: Computer Science and Information Technology 630

0673		11:10-12:35	TTh
		J E HICKS	TEC290

COMPUTER SCIENCE-INFORMATION TECHNOLOGY 691 - COMPUTER PROGRAMMING LABORATORY - 1 UNIT

Prerequisite: None

0674		3:10 hrs/wk	TBA
		J E HICKS	TEC290

COOPERATIVE EDUCATION

Department Chair: Carolyn Magee,
(323) 241-5337,
Businesslasc@yahoo.com

Benefits of Cooperative Education (COOP ED) for the Student: 1. Has the opportunity to learn or improve employment skills under actual working conditions.

2. Gains perspective on career goals through application of classroom theory to "real life experience." 3. Builds self-identity and confidence as a worker through individual attention given by

instructor/coordinators and employers. 4. Has opportunities to test personal abilities in work environments.

5. Has a more realistic approach to the job market.

6. Will gain a better understanding of human relations.

BUSINESS 911 - COOPERATIVE EDUCATION - BUSINESS (CSU) - 1 UNIT

Evening Classes

9313		5:00-6:15	T
		J Y MATTHEWS	LL210

BUSINESS 921 - COOPERATIVE BUSINESS - BUSINESS (CSU) - 2 UNITS

Prerequisite: None. (Paid or volunteer 10-14 hours per week)

Evening Classes

9314	lec	5:00-6:15	T
		J Y MATTHEWS	LL210
	& lab	1:25 hrs/wk	TBA
		J Y MATTHEWS	LL210

BUSINESS 931 - COOPERATIVE EDUCATION - BUSINESS (CSU) - 3 UNITS

(Paid or volunteer 15-19 hours per week)

Evening Classes

9315	lec	5:00-6:15	T
		J Y MATTHEWS	LL210
	& lab	2:25 hrs/wk	TBA
		J Y MATTHEWS	LL210

BUSINESS 941 - COOPERATIVE EDUCATION - BUSINESS (CSU) - 4 UNITS

(Paid or volunteer 20 or more hours per week)

Evening Classes

9316	lec	5:00-6:15	T
		J Y MATTHEWS	LL210
	& lab	2:50 hrs/wk	TBA
		J Y MATTHEWS	LL210



DEVELOPMENTAL COMMUNICATIONS

Department Chair: Phyllis Norwood,
(323) 241-5479, Norwoopk@lasc.edu

DEVELOPMENTAL COMMUNICATIONS 20 - FUNDAMENTALS OF READING AND WRITING (NDA) (CR/NCR) - 6 UNITS

1310	8:00-9:25	MTWTh
	A SLABO	LL110
1311	1:00-2:25	MTWTh
	L B MCFIELD	LL106

DEVELOPMENTAL COMMUNICATIONS 21 - FUNDAMENTALS OF WRITING (NDA) (CR/NCR) - 3 UNITS

Recommended: Concurrent enrollment in Developmental Communications 23. Developmental Communications 21 (combined with Developmental Communications 23) is a prerequisite for students enrolling in English 21.

1312	9:35-11:00	MW
	P A JONES-THOMAS	LL110
1313	11:10-12:35	MW
	L B MCFIELD	LL310
1314	11:10-12:35	TTh
	A SLABO	LL110
1316	1:00-2:25	TTh
	P A JONES-THOMAS	LL110

Evening Classes

4310	6:30-9:40	M
	L B MCFIELD	TEC210

DEVELOPMENTAL COMMUNICATIONS 23 - READING AND STUDY IMPROVEMENT (NDA) (CR/NCR) - 3 UNITS

Recommended: Concurrent enrollment in Developmental Communications 21. Developmental Communications 23 (combined with Developmental Communications 21) is a prerequisite for students enrolling in English 21.

1317	9:35-11:00	TTh
	P.A JONES-THOMAS	LL104
1318	11:10-12:35	MW
	A SLABO	LL310
1319	11:10-12:35	TTh
	L B MCFIELD	LL310
1320	1:00-2:25	MW
	A SLABO	LL310

Evening Classes

4311	6:30-9:40	W
	L JARMON	TEC380

DEVELOPMENTAL COMMUNICATIONS 27 - FUNDAMENTALS OF WRITING

LABORATORY (NDA) (CR/NCR) - 1 UNIT		
1322	2:05hrs/wk	TBA
	P A JONES-THOMAS	LRC2ND FLOOR

DEVELOPMENTAL COMMUNICATIONS 28 - FUNDAMENTALS OF READING

LABORATORY (NDA) (CR/NCR) - 1 UNIT		
Recommended: Concurrent enrollment in Developmental Communications 20 (Lab, 2 hours with homework).		
1323	lab 2:25 hrs/wk	TBA
	P A JONES-THOMAS	LRC2NDF

ECONOMICS

Department Chair: Carolyn Magee,
(323) 241-5337,
Businesslasc@yahoo.com

ECONOMICS 1 - PRINCIPLES OF ECONOMICS I (UC:CSU) - 3 UNITS

Prerequisite: None. Recommended: Take this class after taking Economics 2.

0718	9:35-11:00	MW
	J A MRAVA	LL203

Evening Classes

3633	6:30-9:40	T
	N TOURE	LL203

ECONOMICS 2 - PRINCIPLES OF ECONOMICS II (UC:CSU) - 3 UNITS

Prerequisite: None. Recommended: Take this class before taking Economics 1.

0720	8:00-11:10	S
	W R WHITE	LL118
0719	9:35-11:00	TTh
	N TOURE	LL205



ELECTRONICS

Department Chair: Carolyn Magee,
(323) 241-5337,
Businesslasc@yahoo.com

ELECTRONICS 2 - INTRODUCTION TO ELECTRONICS (CSU) - 3 UNITS

Prerequisite: None.

1625	7:50-11:05	F
	N R MANTENA	TEC150

ELECTRONICS 43 - MEASUREMENT AND TESTING LABORATORY II (RPT 3) - 1 UNIT

Prerequisite: None (Lab 3 hours).

1624	11:25-12:50	TTh
	N R MANTENA	TEC130

ELECTRONICS 56 - COMPUTER CIRCUITS (CSU) - 3 UNITS

Corequisite: Electronics 57

1626	7:50-11:00	M
	N R MANTENA	TEC150

ELECTRONICS 57 - COMPUTER CIRCUITS LABORATORY (CSU) - 1 UNIT

Corequisite: Electronics 56

1627	7:50-11:00	W
	N R MANTENA	TEC150

ELECTRONICS 112 - COMPUTER SERVICING TECHNOLOGY (CSU) - 4 UNITS

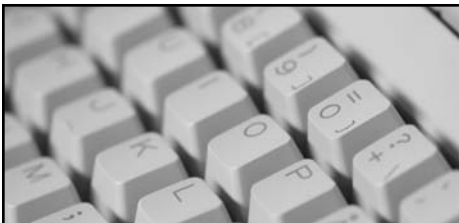
Prerequisite: None (Lecture 3 hours; Lab 3 hours).

1623	lec	11:15-12:40	MW
		N R MANTENA	TEC110
	& lab	12:45-2:15	MW
		N R MANTENA	TEC110

ELECTRONICS 113 - COMPUTER NETWORKING (CSU) - 4 UNITS

Prerequisite: None (Lecture 3 hours, Lab 3 hours).

1621	lec	7:50-11:00	T
		N R MANTENA	TEC110
	& lab	7:50-11:00	Th
		N R MANTENA	TEC110



ENGLISH

Department Chair: Dr. Sharon Maselli,
(323) 241-5219, Masellsa@lasc.edu

The English department offers a sequence of classes designed to coincide with students' reading and writing ability on entering college: **ENGLISH**

21—Write short essays of 150 to 300 words;

ENGLISH 28—Meets the requirement for the A.A. degree; Write longer essays of 300 to 500 words;

ENGLISH 101—Write essays of 500 to 750 words.

The **ENGLISH PLACEMENT TEST** is required of all new students who wish to enroll in their first English composition class. The appropriate class level is recommended by the test scores. Please check your scores in SS210: Hours of operation - 9:00 a.m. to 4:30 p.m., Monday through Thursday.

ENGLISH 21 - ENGLISH FUNDAMENTALS (NDA) (CR/NCR) - 3 UNITS

Prerequisite: Developmental Communications 21 & 23 or ESL 6A and 6B, or appropriate placement recommendation based on assessment results and other multiple measures

0909	8:00-9:25	MW
	C A YOUNGBLOOD	LL104
0910	8:00-9:25	TTh
	STAFF	LL111
0911	8:00-11:10	S
	R DEFRANCE	LL312
0912	9:35-11:00	MW
	A J ADLER	LL112
0913	9:35-11:00	TTh
	S TURNER	LL108
0914	11:10-12:35	MW
	A J ADLER	LL112
0915	11:10-12:35	TTh
	S TURNER	LL108

Evening Classes

4011	4:30-5:55	MW
	A J ADLER	LL210
4010	4:30-5:55	TTh
	STAFF	SS314
4012	6:30-9:40	M
	A J ADLER	LL210
4013	6:30-9:40	T
	S TURNER	LL114
4029	6:30-9:40	W
	STAFF	LL113

ENGLISH 28 - INTERMEDIATE READING AND COMPOSITION - 3 UNITS

Prerequisite: English 21 with a grade of "C" or better, or appropriate placement recommendation based on assessment results and other multiple measures.

0917	8:00-9:25	MW
	STAFF	LL 106
0918	8:00-9:25	TTh
	B N KERMANE	LL 108
0919	8:00-11:00	S
	A L MCDUFFIE	LL 212
0920	9:35-11:00	MW
	D S ECKERSLEY	SS314
0921	9:35-11:00	TTh
	B N KERMANE	LL111
0923	11:10-12:35	MW
	S TURNER	LL108
0924	11:10-12:35	TTh
	H J FACTOR	LL106

Evening Classes

4014	4:30-5:55	MW
	A L MCDUFFIE	LL106
4015	4:30-5:55	TTh
	H J FACTOR	LL104
4016	6:30-9:40	M
	M T ROBERTS	LL212
4018	6:30-9:40	T
	M T ROBERTS	LL106
4017	6:30-9:40	W
	N L BILLINGSLEA	LL404

ENGLISH 94 - INTENSIVE GRAMMAR REVIEW (NDA) - 3 UNITS

Prerequisite: None

0925	11:10 - 12:35	TTh
	S V DILLON	LL210

ENGLISH 101 - COLLEGE READING AND COMPOSITION I (UC:CSU) - 3 UNITS

Prerequisite: English 28 or English 31 with a grade of "C" or better, or appropriate placement recommendation based on assessment results and other multiple measures.

0928	8:00-9:25	MW
	STAFF	LL112
0926	8:00-9:25	TTh
	D L CIFARELLI	LL106
0927	8:00-11:10	S
	STAFF	LL203
0929	9:35-11:00	TTh
	D L CIFARELLI	LL106
0930	11:10-12:35	MW
	S A MASELLI	LL106

Evening Classes

4019	6:30-9:40	M
	S A MASELLI	LL310
4020	6:30-9:40	T
	G H RUBIO	TEC360
4021	6:30-9:40	Th
	N L BILLINGSLEA	LL113
4022	3:35 hrs/wk	TBA
	STAFF	ONLINE

Online Class: Online orientation to be held on campus, Wednesday, February 6, 2008 at 6:30-9:30 p.m. in TEC340. Please contact department at (323) 241-5219.

4023	3:10 hrs/wk	TBA
	C NORRIS	ONLINE

Online Class: Online orientation to be held on campus, Wednesday, February 6, 2008 at 6:30-9:30 p.m. in TEC340. Please contact instructor via email:

Norris@email.lasc.cc.ca.us.

ENGLISH 102 - COLLEGE READING AND COMPOSITION II (UC:CSU) - 3 UNITS

Prerequisite: English 101

0931	9:35-11:00	MW
	S A MASELLI	LL106

Evening Classes

4024	6:30-9:40	W
	A J ADLER	LL210
4025	3:10 hrs/wk	TBA
	S V DILLON	ONLINE

Online Class: Online orientation to be held on campus, Wednesday, February 6, 2008 at 6:30-9:30 p.m. in TEC340. Please contact instructor via email:

emailmyprofessor@yahoo.com

Honors Program

0930	11:10-12:35	MW
	S A MASELLI	LL106

ENGLISH 103 - COMPOSITION AND CRITICAL THINKING (UC:CSU) - 3 UNITS

Prerequisite: English 101

0933	8:00-9:25	TTh
	STAFF	LL205
0932	9:35-11:00	MW
	C A YOUNGBLOOD	LL111

Evening Classes

4026	6:30-9:40	W
	A ANTLER	LL212
4027	6:30-9:40	T
	A J ADLER	LL210
4028	3:10 hrs/wk	TBA
	S V DILLON	ONLINE

Online Class: Online orientation to be held on campus, Wednesday, February 6, 2008 at 6:30-9:30 p.m. in TEC340. Please contact instructor via email:

emailmyprofessor@yahoo.com

(Cont'd)

ENGLISH 211 - FICTION (UC:CSU) (RPT 1) - 3 UNITS

Prerequisite: English 101
 0934 9:35-11:00 TTh
 S V DILLON LL112

ENGLISH 234 - AFRICAN-AMERICAN LITERATURE I (UC:CSU) - 3 UNITS

Prerequisite: English 101
 0935 9:35-11:00 MW
 S TURNER LL108

ENGLISH AS A SECOND LANGUAGE

Department Chair: Dr. Sharon Maselli,
 (323) 241-5219, Masellsa@lasc.edu

ENGLISH AS A SECOND LANGUAGE 2A - COLLEGE ENGLISH AS A SECOND LANGUAGE: INTEGRATED SKILLS A (NDA) - 6 UNITS

Prerequisite: ESL 1A (Students may enroll concurrently in 2A and 2B).
 1872 8:00-11:10 MW
 M J BRAUN LL114
 CARRANCO

Evening Classes

4871 6:30-9:40 MW
 T J STOCKFISCH SS315

ENGLISH AS A SECOND LANGUAGE 2B - COLLEGE ENGLISH AS A SECOND LANGUAGE II: INTEGRATED SKILLS (NDA) - 6 UNITS

(Students may enroll concurrently in 2A and 2B).
 1873 8:00-11:00 TTh
 J A HENDERSHOT LL212

ENGLISH AS A SECOND LANGUAGE 3A - COLLEGE ESL III: WRITING/GRAMMAR: READING/VOC: LIST/SPEAK 3A - 6 UNITS

Prerequisites: ESL 2A & 2B
 1875 8:00-11:00 MW
 J A HENDERSHOT LL212

Evening Classes

4873 6:30-9:40 MW
 C R BRIONES LL402

ENGLISH AS A SECOND LANGUAGE 3B - COLLEGE ESL III: WRITING/GRAMMAR: READING/VOC: LIST/SPEAK 3B - 3 UNITS

Prerequisite: ESL 2A & 2B
 1877 9:35-11:00 TTh
 M J BRAUN LL114
 CARRANCO

Evening Classes

4945 6:30-9:40 T
 C A HOLGUIN TEC 221

ENGLISH AS A SECOND LANGUAGE 4A - COLLEGE ESL IV: WRITING/GRAMMAR: READING/VOC: LIST/SPEAK 4A (NDA) - 6 UNITS

Prerequisite: ESL 3A
 1880 8:00-11:00 MW
 M E PITTS LL210

Evening Classes

4880 6:30-9:40 MW
 B ELIMELECH LL303

ENGLISH AS A SECOND LANGUAGE 4B - COLLEGE ESL IV: WRITING/GRAMMAR: READING/VOC: LIST/SPEAK 4B (NDA) - 3 UNITS

Prerequisite: ESL 3B
 1882 8:00-9:25 TTh
 M J BRAUN LL114
 CARRANCO

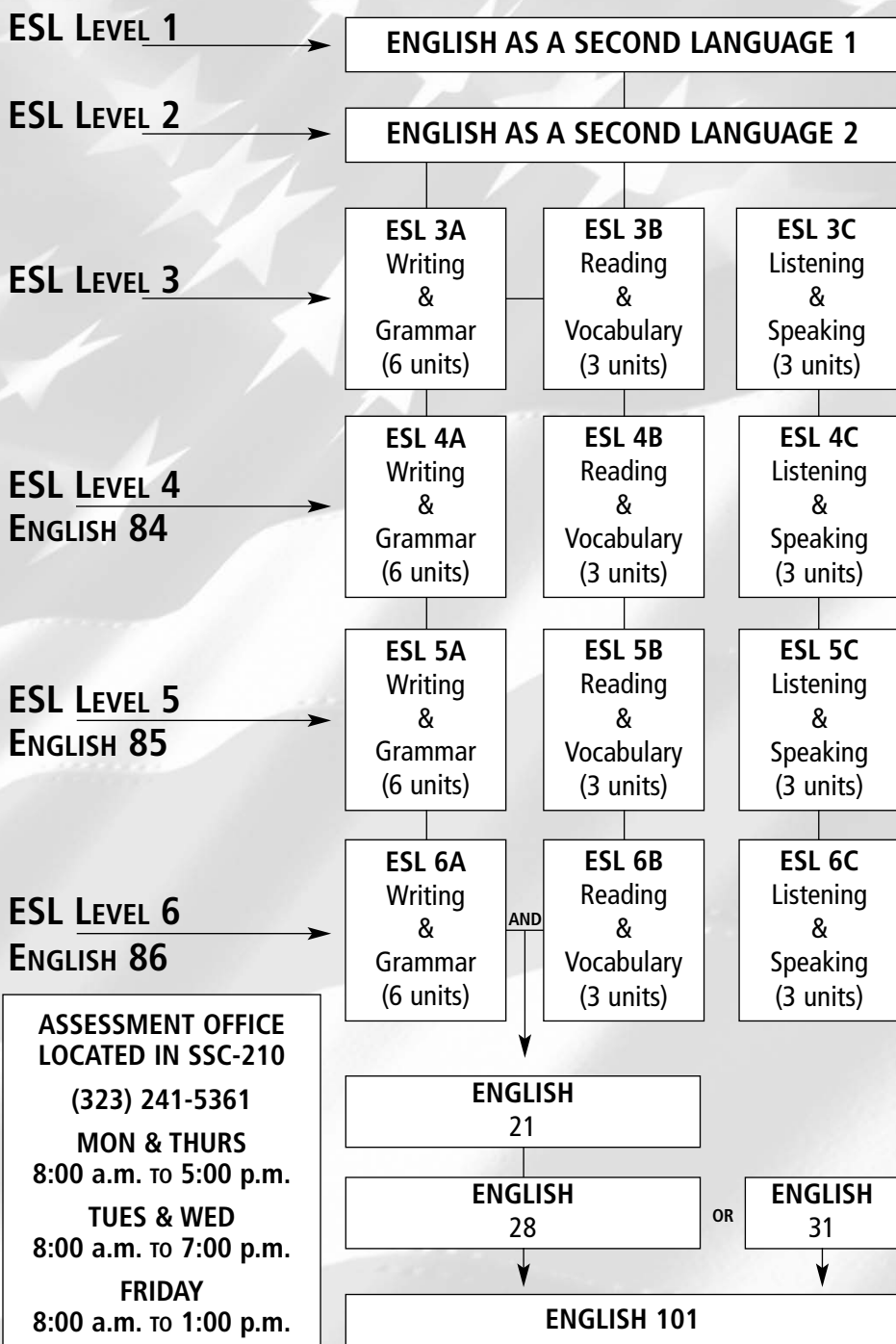
Evening Classes

4882 6:30-9:40 T
 STAFF LL212



ESL COURSE SEQUENCE

**CHECK COURSE LISTING FOR DETAILS
 AND OTHER INFORMATION**



**ASSESSMENT OFFICE
 LOCATED IN SSC-210**
 (323) 241-5361
MON & THURS
 8:00 a.m. to 5:00 p.m.
TUES & WED
 8:00 a.m. to 7:00 p.m.
FRIDAY
 8:00 a.m. to 1:00 p.m.

**ENGLISH AS A SECOND LANGUAGE 5A -
COLLEGE ESL V: WRITING/GRAMMAR:
READING/VOC: LIST/SPEAK 5A
(UC:CSU) - 6 UNITS**

Prerequisite: ESL 4A
8222 8:00-11:00 MW
A G GUTIERREZ LL116

Evening Classes

5212 6:30-9:40 MW
L J GROSS LL114

**ENGLISH AS A SECOND LANGUAGE 5B -
COLLEGE ESL V: WRITING/GRAMMAR:
READING/VOC: LIST/SPEAK 5B (NDA)
- 3 UNITS**

Prerequisite: ESL 4B
8223 9:35-11:00 TTh
M E PITTS LL210

Evening Classes

5208 6:30-9:35 T
STAFF LL402

**ENGLISH AS A SECOND LANGUAGE 6A -
COLLEGE ESL VI: WRITING/GRAMMAR:
READING: VOC: LIST/SPEAK 6A (NDA)
- 6 UNITS**

Prerequisite: ESL 5A
8224 8:00-11:00 MW
A G GUTIERREZ LL116

**ENGLISH AS A SECOND LANGUAGE 6B -
COLLEGE ESL VI: WRITING/GRAMMAR:
READING/VOC: LIST/SPEAK 6B
(NDA) - 3 UNITS**

Prerequisite: ESL 5B
8225 9:35-11:00 TTh
M E PITTS LL210

Evening Classes

5209 6:30-9:35 T
STAFF LL402

FINANCE

**Department Chair: Carolyn Magee,
(323) 241-5337,
Businesslasc@yahoo.com**

**FINANCE 15 – PRINCIPLES OF BANKING
(CSU) - 3 UNITS**

Prerequisite: ESL 5C.
0705 8:00-11:00 S
STAFF LL205

FRENCH

**Department Chair: Dr. Sharon Maselli,
(323) 241-5219, Masellsa@lasc.edu**

**FRENCH 1 - ELEMENTARY FRENCH I
(UC:CSU) - 5 UNITS**

Prerequisite: None
Evening Classes
5222 6:30-9:00 TTh
M N NDOLEY LL312

**FRENCH 2 - ELEMENTARY FRENCH II
(UC:CSU) - 5 UNITS**

Prerequisite: French 1
Evening Classes
5223 6:30-9:00 TTh
M N NDOLEY LL312

GEOGRAPHY

**Department Chair: Glenn Yoshida,
(323) 241-5296, Yoshidgy@lasc.edu**

**GEOGRAPHY 1 - PHYSICAL GEOGRAPHY
(UC:CSU) - 3 UNITS**

Prerequisite: None
0417 11:10-12:35 TTh
L L FIELDING LL402

Evening Classes

3438 6:30-9:40 M
L L FIELDING LL404

GEOLOGY

**Department Chair: Glenn Yoshida,
(323) 241-5296, Yoshidgy@lasc.edu**

**GEOLOGY 1 - PHYSICAL GEOLOGY
(UC:CSU) - 3 UNITS**

Prerequisite: None. For students needing Natural Science or Physical Science credit to meet university transfer requirements.

1550 9:35-11:00 MW
P R DOOSE LL413

Evening Classes

4540 6:30-9:40 M
P R DOOSE LL413

GEOLOGY 6 - PHYSICAL GEOLOGY LABORATORY (UC:CSU) - 2 UNITS

Corequisite: Geology 1 or previous enrollment.
(Lecture 1 hour; Lab, 2 hours)

Evening Classes

4541	lab	6:30-9:40	W
		P R DOOSE	LL413
4542	lab	6:30-9:40	Th
		L L FIELDING	LL413

HEALTH

Department Chair: Glenn Yoshida,
(323) 241-5296, Yoshidgy@lasc.edu

HEALTH 11 - PRINCIPLES OF HEALTHFUL LIVING (UC:CSU) - 3 UNITS

Prerequisite: None

1560	8:00-9:25	MW
	S K COLLINS HEADS	SS315
1561	8:00-9:25	TTh
	S K COLLINS HEADS	SS315
1562	9:35-11:00	MW
	S K COLLINS HEADS	SS315
1563	9:35-11:00	TTh
	STAFF	LL402
1564	11:45-1:10	MW
	F J GARNETT	LL213
1565	1:00-2:25	MW
	S K COLLINS HEADS	SS315
1566	3:00-6:10	T
	F J GARNETT	LL213

Evening Classes

4550	6:30-9:40	T
	F J GARNETT	LL213
4551	6:30-9:40	Th
	F J GARNETT	LL213

HISTORY

Department Chair: Sandra Lee,
(323) 241-5224, Lees@lasc.edu

HISTORY 1 - INTRODUCTION TO WESTERN CIVILIZATION I (UC:CSU) - 3 UNITS

Prerequisite: None

0482	11:10-12:35	MW
	STAFF	LL102

Evening Classes

3448	4:30-5:55	TTh
	W A POWELL	LL102

HISTORY 2 - INTRODUCTION TO WESTERN CIVILIZATION II (UC:CSU) - 3 UNITS

Prerequisite: None. Note: History 2 may be taken before History 1.

Evening Classes

0483	8:00-11:00	S
	J L DIAZ	LL102

HISTORY 11 - POLITICAL AND SOCIAL HISTORY OF THE UNITED STATES I (UC:CSU) - 3 UNITS

Prerequisite: None

0485	9:35-11:00	TTh
	STAFF	LL102

Evening Classes

3440	6:00-9:10	T
	W A POWELL	LL102
3441	6:30-9:40	W
	W A POWELL	LL102

HISTORY 12 - POLITICAL AND SOCIAL HISTORY OF THE UNITED STATES II (UC:CSU) - 3 UNITS

Prerequisite: None

0484	9:35-11:00	MW
	STAFF	LL102

HISTORY 41 - THE AFRICAN AMERICAN IN THE HISTORY OF THE U.S. I (UC:CSU) - 3 UNITS

Prerequisite: None

0488	11:10-12:35	TTh
	W A POWELL	LL102

Evening Classes

3444	6:30-9:40	Th
	W A POWELL	LL102



SPRING ■ 2008

SCHEDULE OF CLASSES

HISTORY 52 - THE ROLE OF WOMEN IN THE HISTORY OF THE U.S. (UC:CSU) - 3 UNITS

Prerequisite: None

Evening Classes

3445	6:30-9:40	M
	W A POWELL	LL102

HUMANITIES

Department Chair: Patricia Lewis,
(323) 241-5352, Lewispa@lasc.edu

HUMANITIES 1 - CULTURAL PATTERNS OF WESTERN CIVILIZATION (UC:CSU) - 3 UNITS

Prerequisite: None

0396	11:10-12:35	MW
	C P SWEENEY	LL103
3101	5:30-8:40	MW
	G DONOVETSKY	LL111

(8 Week Class - Starts 2/04/2008, Ends 4/04/2008)

HUMANITIES 2 - STUDIES IN SELECTED CULTURES (UC:CSU) - 3 UNITS

Prerequisite: None. Recommended: Eligibility for English 101.

0397	11:10-12:35	TTh
	E L YOUNG	LL116

Honors Program

8018	11:10-12:35	TTh
	E L YOUNG	LL116

LAW

Department Chair: Carolyn Magee,
(323) 241-5337,
Businesslasc@yahoo.com

LAW 14 - LAW OFFICE MANAGEMENT - 3 UNITS

Prerequisite: None. NEXT OFFERED SPRING 2009

Evening Classes

3631	6:30-9:40	MW
	J BOWMAN	LL116

(8 Week Class - Starts 2/4/2008, Ends 4/4/2008)

LAW 16 – CIVIL AND CRIMINAL EVIDENCE - 3 UNITS

Prerequisite: None

Evening Classes

3635	6:30-9:40	MW
	K M COX	LL116

(8 Week Class - Starts 4/07/2008, Ends 5/30/2008)

LEARNING SKILLS

Department Chair: Phyllis Norwood,
(323) 241-5477, Norwoopk@lasc.edu

ALL LEARNING SKILLS CLASSES START TUESDAY, SEPTEMBER 4, 2008. GO TO 3RD FLOOR OF LIBRARY PRIOR TO SEPTEMBER 4, 2008 FOR ENROLLMENT INFORMATION.

LEARNING SKILLS 1A - READING A (NDA) (CR/NCR) - 1 UNIT

—	3:10 hrs/wk	TBA
	A CHUKUMERIJE	LRC 3RD FLOOR

LEARNING SKILLS 1B - READING B (NDA) (CR/NCR) - 1 UNIT

—	3:10 hrs/wk	TBA
	A CHUKUMERIJE	LRC 3RD FLOOR

LEARNING SKILLS 1C - READING C (NDA) (CR/NCR) - 1 UNIT

—	3:30 hrs/wk	TBA
	A CHUKUMERIJE	LRC 3RD FLOOR

LEARNING SKILLS 2A - ENGLISH FUNDAMENTALS A (NDA) (CR/NCR) - 1 UNIT

—	3:30 hrs/wk	TBA
	S V DILLON	LRC 3RD FLOOR

LEARNING SKILLS 2B - ENGLISH FUNDAMENTALS B (NDA) (CR/NCR) - 1 UNIT

—	3:30 hrs/wk	TBA
	S V DILLON	LRC 3RD FLOOR

LEARNING SKILLS 2C - ENGLISH FUNDAMENTALS C (NDA) (CR/NCR) - 1 UNIT

—	3:30 hrs/wk	TBA
	S V DILLON	LRC 3RD FLOOR

**LEARNING SKILLS 3A - VOCABULARY
DEVELOPMENT A (NDA) (CR/NCR) -
1 UNIT**

—	1:05 hrs/wk S V DILLON FLOOR	TBA LRC 3RD FLOOR
---	------------------------------------	-------------------------

**LEARNING SKILLS 3B - VOCABULARY
DEVELOPMENT B (NDA) (CR/NCR) -
1 UNIT**

—	1:05 hrs/wk S V DILLON	TBA LRC 3RD FLOOR
---	---------------------------	-------------------------

**LEARNING SKILLS 3C - VOCABULARY
DEVELOPMENT C (NDA) (CR/NCR) -
1 UNIT**

—	1:05 hrs/wk S V DILLON	TBA LRC 3RD FLOOR
---	---------------------------	-------------------------

**LEARNING SKILLS 3D - VOCABULARY
DEVELOPMENT D (NDA) (CR/NCR) -
1 UNIT**

—	1:05 hrs/wk S V DILLON	TBA LRC 3RD FLOOR
---	---------------------------	-------------------------

**LEARNING SKILLS 4 - THE MECHANICS
OF SPELLING (NDA) (CR/NCR) 1 UNIT**

—	3:10 hrs/wk A CHUKUMERIJE	TBA LRC 3RD FLOOR
---	------------------------------	-------------------------

**LEARNING SKILLS 6A - ACADEMIC STUDY
SKILLS A (NDA) (CR/NCR) - 1 UNIT**

—	3:10 hrs/wk A CHUKUMERIJE	TBA LRC 3RD FLOOR
---	------------------------------	-------------------------

**LEARNING SKILLS 6B - ACADEMIC STUDY
SKILLS B (NDA) (CR/NCR) - 1 UNIT**

—	3:30 hrs/wk S V DILLON	TBA LRC 3RD FLOOR
---	---------------------------	-------------------------

**LEARNING SKILLS 6C - ACADEMIC STUDY
SKILLS C (NDA) (CR/NCR) - 1 UNIT**

—	3:10 hrs/wk S V DILLON	TBA LRC 3RD FLOOR
---	---------------------------	-------------------------

**LEARNING SKILLS 7A – BASIC
COMPOSITION A (NDA) (CR/NCR) – 1 UNIT**

—	3:10 STAFF	TBA LRC 3RD FLOOR
---	---------------	-------------------------

**LEARNING SKILLS 7B – BASIC
COMPOSITION B (NDA) (CR/NCR) – 1 UNIT**

—	3:10 STAFF	TBA LRC 3RD FLOOR
---	---------------	-------------------------

**LEARNING SKILLS 7C – BASIC
COMPOSITION C (NDA) (CR/NCR) – 1 UNIT**

—	1:05 STAFF	TBA LRC 3RD FLOOR
---	---------------	-------------------------

**LEARNING SKILLS 10A - MATHEMATICS
FUNDAMENTALS A (NDA) (CR/NCR) -
1 UNIT**

—	3:30 hrs/wk E HECTOR	TBA TEC185
---	-------------------------	---------------

**LEARNING SKILLS 10B - MATHEMATICS
FUNDAMENTALS B (NDA) (CR/NCR) -
1 UNIT**

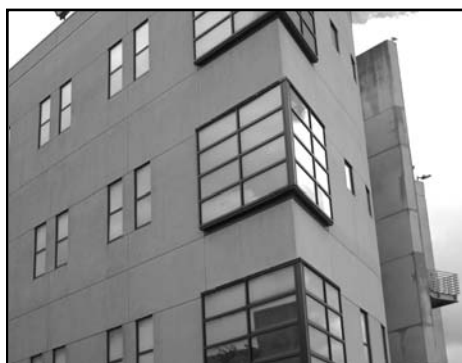
—	3:30 hrs/wk E HECTOR	TBA TEC185
---	-------------------------	---------------

**LEARNING SKILLS 10C - MATHEMATICS
FUNDAMENTALS C (NDA) (CR/NCR) -
1 UNIT**

—	3:30 hrs/wk E HECTOR	TBA TEC185
---	-------------------------	---------------

**LEARNING SKILLS 20 – EFFECTIVE
NOTETAKING (NDA) (CR/NCR) - 1 UNIT**

—	3:10 hrs/wk P K NORWOOD	TBA LRC 3RD FLOOR
---	----------------------------	-------------------------



MATH SEQUENCE

OVERVIEW OF MATH COURSES OFFERED

Math 105 (3 Units) – Arithmetic for College Students

A review of fractions, decimals, percents, etc. Requires 8 hours of study each week outside of class.



Math 112 (3 Units) – Pre-Algebra

This course bridges the gap between arithmetic and algebra. It reviews arithmetic and introduces concepts of algebra including signed numbers, variables, exponents, mathematical sentences and linear equations.



Math 115 (5 Units) – Elementary Algebra

This is equivalent of 1st year high school algebra, done in one semester.
 Required for an A.A. degree (may be taken by exam).



Math 125 (5 Units) – Intermediate Algebra

The equivalent of 2nd year high school algebra, done in one semester. To earn a bachelor's degree at CSU, students must either pass a CSU math test beyond the Math 125 level or take a math course beyond Math 125.

→ **Math 215***
 (3 Units) Principles of Mathematics I

→ **Math 216**
 (3 Units) Principles of Mathematics II
Prerequisite Math 240

→ **Math 227***
 (4 Units) Introductory Statistics

→ **Math 230***
 (3 Units) Math and Liberal Arts Students

→ **Math 235***
 (5 Units) Finite Mathematics

→ **Math 236***
 (5 Units) Calculus for Business
 and Social Science

→ **Math 240***
 (3 Units) Trigonometry

→ **Math 245***
 (3 Units) College Algebra

Math 260
 (5 Units) Pre-Calculus
Prerequisite Math 240

Math 265
 (5 Units) Pre-Calculus with Analytic Geometry I
Prerequisite Math 240 & 245 or Math 260

Math 266
 (5 Units) Pre-Calculus with Analytic Geometry II
Prerequisite Math 265

Math 267
 (5 Units) Pre-Calculus with Analytic Geometry III
Prerequisite Math 266

Math 270
 (3 Units) Linear Algebra
Prerequisite Math 266

Math 275
 (3 Units) Ordinary Differential Equations
Prerequisite Math 267

***NOTE: PREREQUISITE MATH 125 FOR MATH 215, 227, 230, 235, 236, 240, & 245**

ASSESSMENT OFFICE LOCATED IN SSC-210 (323) 241-5361

Monday, Tuesday & Thursday: 8:00 a.m. to 5:00 p.m.

Wednesday: 8:00 a.m. to 7:00 p.m. / Friday: 8:00 a.m. to 1:00 p.m.

LIBRARY SCIENCE

Department Chair: Linda Brady, (323)
241-5255, Bradylj@lasc.edu

LIBRARY SCIENCE 101 - LIBRARY RESEARCH METHODS (UC:CSU) - 1 UNIT

Prerequisite: None

Evening Classes

4500	5:00-6:00	TTh
	STAFF	LIBRARY

(8 Week Class - Starts 4/7/2008, Ends 5/30/2008)

MANAGEMENT

Department Chair: Carolyn Magee,
(323) 241-5337,
Businesslasc@yahoo.com

MANAGEMENT 2 - ORGANIZATION AND MANAGEMENT THEORY (CSU) - 3 UNITS

Prerequisite: None

0725	11:10-12:35	TTh
	J A MRAVA	LL203

MANAGEMENT 33 - PERSONNEL MANAGEMENT - 3 UNITS

Prerequisite: None

Evening Classes

3600	6:30-9:40	Th
	N TOURE	LL203

MATHEMATICS

Department Chair: Dr. Lernik Saakian,
(323) 241-5366, Saakianl@lasc.edu

MATHEMATICS 105 - ARITHMETIC (NDA) - 3 UNITS

Prerequisite: None

1660	8:00-9:25	TTh
	A GIZAW	TEC210
1661	9:35-11:00	MW
	R BLYTHER	TEC211
1662	9:35-11:00	TTh
	L T LEE	TEC391
1665	1:10-2:35	MW
	S L JOHNSON	TEC121

Evening Classes

4650	6:30-9:40	M
	A ARUTYUNYAN	TEC221
4651	6:30-9:40	W
	O OKONTA	TEC121
4652	6:00-8:05	MW
	A ROACH	COX 301

(12 Week Class - Starts 3/3/2008, Ends 5/30/2008)

MATHEMATICS 112 - PRE-ALGEBRA (NDA) - 3 UNITS

Prerequisite: None.

1666	8:00-9:25	MW
	R BLYTHER	TEC211
1668	9:35-11:00	TTh
	I GROMOVA	TEC221
1669	10:00-1:10	F
	STAFF	TEC221
1670	11:10-12:35	MW
	S L JOHNSON	TEC391
1671	11:10-12:35	TTh
	L T LEE	TEC291
1672	1:10-2:35	TTh
	Z W DAMMENA	TEC221
1673	3:10 hrs/wk	TBA
	E HECTOR	TEC210

Online course. Orientations to be held on campus Tuesday, February 5, 2008 at 10:00 a.m. or 6:00 p.m. in the Little Theater. Please contact instructor via website: www.lasc.edu/online or call (323) 241-5385.

Evening Classes

4653	6:30-9:40	M
	J V CARBONELL	TEC121
4654	6:30-9:40	T
	J JIANG	TEC381
4655	6:30-9:40	Th
	Y CHANG	TEC221
4656	6:00-8:05	TTh
	P J STODDARD	TEC211

(12 Week Class - Starts 3/4/2008, Ends 5/29/2008)

MATHEMATICS 115 - ELEMENTARY ALGEBRA - 5 UNITS

Prerequisite: Mathematics 112 with a grade of "C" or better or appropriate placement through assessment.

1674	8:00-9:10	MTWTh
	G T TADELE	TEC291
1696	8:00-10:30	MW
	STAFF	TEC380
1675	9:35-12:05	MW
	L P GRAVES	TEC121
1676	9:35-12:05	TTh
	M MARTIROSIAN	TEC360
1677	11:10-1:35	TTh
	G T TADELE	TEC381

(Cont'd)

(Cont'd)

SPRING ■ 2008

SCHEDULE OF CLASSES

MATHEMATICS 115 (Cont'd)

1678	11:10-1:40	MW
	V AVAKYAN	TEC111
1679	8:00-10:30	TTh
	K OGANYAN	TEC210
1680	5:20 hrs/wk	TBA
	E HECTOR	TEC210

Online course. Orientations to be held on campus Tuesday, February 5, 2008 at 10:00 a.m. or 6:00 p.m. in the Little Theater. Please contact instructor via email: www.lasc.edu/online or call (323) 241-5385.

1681	5:25 hrs/wk	TBA
	M MIRFATTAH	TEC185

This is an online course. You must have a PC (not MAC), Internet access, and a valid e-mail address. To prepare for the mandatory on-campus orientation, you must visit <http://www.onlineteaching.com/start.htm> and view the online orientation for Los Angeles Southwest College. Orientations to be held on campus Tuesday, February 5, 2008 at 10:00 a.m. or 6:00 p.m. in the Little Theater. Please contact instructor via email: questions@onlineteaching.com or (562) 233-9770.

Evening Classes

4657	4:00-6:30	MW
	Z W DAMMENA	TEC291
4658	4:00-6:30	TTh
	Z W DAMMENA	TEC291
4659	6:30-9:00	MW
	G M CHEN	TEC391
4660	6:30-9:00	MW
	C G VANISH	TEC380
4661	6:30-9:15	TTh
	STAFF	TEC111

MATHEMATICS 125 - INTERMEDIATE ALGEBRA - 5 UNITS

Prerequisite: Mathematics 115

1682	8:00-10:30	TTh
	S SAAKIAN	TEC211
1683	9:35-10:45	MTWTh
	G T TADELE	TEC291
1684	9:35-10:45	MTWTh
	E HECTOR	TEC210
1685	11:10-1:40	MW
	L SAAKIAN	TEC381

Evening Classes

4663	6:30-9:00	MW
	Z W DAMMENA	TEC381
4662	6:30-9:00	TTh
	A GIZAW	TEC380
4664	3:20 hrs/wk	TBA
	D W DAMMENA	TEC185

This is an online course. You must have PC (not MAC), Internet access, and a valid e-mail address. To prepare for the mandatory on-campus orientation, you must visit <http://www.onlineteaching.com/start.htm> and view

MATHEMATICS 125 (Cont'd)

the online orientation for Los Angeles Southwest College. Orientations to be held on campus Tuesday, September 5, 2008 at 10:00 a.m. or 6:00 p.m. in the Little Theater. Please contact instructor via email: Dimetros@yahoo.com or (323) 241-5368.

MATHEMATICS 227 - STATISTICS (UC:CSU) - 4 UNITS

Prerequisite: Mathematics 125

1689	8:00-12:15	S
	D W DAMMENA	TEC 111
1690	11:10-1:15	MW
	G T TADELE	TEC 211

Evening Classes

4665	6:00-8:05	MW
	G T TADELE	TEC211

MATHEMATICS 230 - MATHEMATICS FOR LIBERAL ARTS STUDENTS (UC:CSU) - 3 UNITS

Prerequisite: Mathematics 125

Evening Classes

4666	6:30-9:40	T
	L HALL	TEC391

MATHEMATICS 235 - FINITE MATHEMATICS (UC:CSU) - 5 UNITS

Prerequisite: Mathematics 125

Evening Classes

4667	6:30-9:00	TTh
	Z W DAMMENA	TEC291

MATHEMATICS 236 - CALCULUS FOR BUSINESS AND SOCIAL SCIENCE (UC:CSU) - 5 UNITS

Prerequisite: Mathematics 125.

1697	11:00-10:30	TTh
	STAFF	TEC381

MATHEMATICS 240 - TRIGONOMETRY (CSU) - 3 UNITS

Prerequisite: Mathematics 125

1692	8:00-1:25	TTh
	STAFF	TEC121

MATHEMATICS 245 - COLLEGE ALGEBRA (UC:CSU) - 3 UNITS

Prerequisite: Mathematics 125

1693	9:35-11:00	MW
	L SAAKIAN	TEC381
1694	11:10-12:35	TTh
	E HECTOR	TEC210

(Cont'd)

MATHEMATICS 266 - CALCULUS WITH ANALYTIC GEOMETRY II (UC:CSU)

- 5 UNITS

Prerequisite: Mathematics 265

Evening Classes

4669	6:30-9:00	MW
	STAFF	TEC291

MEDIA ARTS

Department Chair: Patricia Lewis,
(323) 241-5352, Lewispa@lasc.edu

MEDIA ARTS 101 - INTRODUCTION TO DIGITAL FILM/VIDEO PRODUCTION (UC:CSU) - 3 UNITS

Prerequisite: None. Lecture 2 hours; Lab 2 hours.

0272	lec	9:00-11:05	M
		R D BROWN	LL316
	& lab	11:10-1:15	M
		R D BROWN	LL316

MICROBIOLOGY

Department Chair: Glenn Yoshida,
(323) 241-5296, Yoshidgy@lasc.edu

MICROBIOLOGY 1 - INTRODUCTORY MICROBIOLOGY (UC:CSU) - 5 UNITS

Prerequisite: Chemistry 51 and Biology 3 or Physiology 1 or equivalent. Lecture 3 hours; Lab, 6 hours.

1570	lec	3:00 hrs/wk TBA	-
		K KIM	ONLINE
	& lab	9:40-12:50	TTh
		A C WALKER	LL305
1571	lec	9:35-11:00	WF
		A C WALKER	LL403
	& lab	11:30-2:40	WF
		A C WALKER	LL305

Evening Classes

4560	lec	6:30-9:40	W
		H TECLE	LL305
	& lab	6:30-9:40	TTh
		H TECLE	LL305

MUSIC

Department Chair: Patricia Lewis,
(323) 241-5352, Lewispa@lasc.edu

MUSIC 101 - FUNDAMENTALS OF MUSIC (UC:CSU) - 3 UNITS

Prerequisite: None

0171	8:00-9:25	MW
	STAFF	LL103

Evening Classes

3019	6:30-9:40	Th
	F B PULLUM	LL114

MUSIC 111 - MUSIC APPRECIATION I (UC:CSU) - 3 UNITS

Prerequisite: None

0172	9:35-11:00	MW
	N WHEELER	LL103
0173	12:35-2:00	TTh
	STAFF	LL103

Evening Classes

3020	6:30-9:40	M
	N WHEELER	LL110

MUSIC 321 - ELEMENTARY PIANO I (UC:CSU) - 2 UNITS

Prerequisite: None. Lecture 1 hour, Lab 2 hours.

8200	11:10-12:35	TTh
	R A CUMMINGS	TEC170

MUSIC 322 - ELEMENTARY PIANO II (UC:CSU) - 2 UNITS

Prerequisite: Music 321 (Lecture 1 hour; Lab 2 hours with homework).

8201	11:10-12:35	TTh
	R A CUMMINGS	TEC170



NURSING 501B - FUNDAMENTALS OF NURSING B (CSU) - 4.50 UNITS

Prerequisite: Nursing 501A and 527. See Nursing Program in College Catalog. Lecture 4.5 hours; Lab 17 hours.

(Classes meet the first week on campus)

_____	lec	1:00-4:00	M
		STAFF	LL105
	& lec	1:00-4:00	T
		STAFF	LL105
	& lab	11:00 hrs/wk	TBA
		S A HINKLE	GARDENA

(8 Week Class - Starts 4/07/2008, Ends 5/30/2008)

_____	lec	1:00-4:00	M
		STAFF	LL105
	& lec	1:00-4:00	T
		STAFF	LL105
	& lab	5:20 hrs/wk (W)	TBA
		STAFF	GARDENA
	& lab	5:20 hrs/wk (Th)	TBA
		STAFF	GARDENA

(8 Week Class - Starts 4/07/2008, Ends 5/30/2008)

_____	lec	1:00-4:00	M
		STAFF	LL 105
	& lec	1:00-4:00	T
		STAFF	LL 105
	& lab	11:00 hrs/wk	TBA
		J H WILLIAMS	KAISER
			WLA

(8 Week Class - Starts 4/07/2008, Ends 5/30/2008)

_____	lec	1:00-4:00	M
		J H WILLIAMS	LL105
	& lec	1:00-4:00	T
		J H WILLIAMS	LL105
	& lab	3:00-10:50	W
		M WHITE	HUCLA
	& lab	3:00-10:50	Th
		D F WEBSTER	HUCLA

(8 Week Class - Starts 4/07/2008, Ends 5/30/2008)

_____	lec	1:00-4:00	M
		STAFF	LL105
	& lec	1:00-4:00	T
		STAFF	LL105
	& lab	11:05 hrs/wk	TBA
		STAFF	HOSPITAL

(8 Week Class - Starts 4/07/2008, Ends 5/30/2008)

NURSING 502A - MEDICAL SURGICAL NURSING I A (CSU) - 4.50 UNITS

Prerequisite: Nursing 501B and 526 with a grade of "C" or better. Lecture 4.5 hours; Lab 17 hours.

(Classes meet the first week on campus)

_____	lec	9:00-2:15	M
		E J WILLIAMS	LL410
	& lec	9:00-2:15	Th
		E J WILLIAMS	LL410

(Cont'd)

NURSING 502A (Cont'd)

	& lab	11:00 hrs/wk	TBA
		B L HOLMES	HUCLA

(8 Week Class - Starts 2/4/2008, Ends 4/04/2008)

_____	lec	9:00-2:15	M
		E J WILLIAMS	LL410
	& lec	9:00-2:15	Th
		E J WILLIAMS	LL410
	& lab	5:20 hrs/wk	TBA
		I M GOBBIDON	KAISER
			SUN
	& lab	5:20 hrs/wk	TBA
		M C SIMMONS	KAISER
			SUN

(8 Week Class - Starts 2/4/2008, Ends 4/04/2008)

_____	lec	9:00-2:15	M
		E J WILLIAMS	LL410
	& lec	9:00-2:15	Th
		E J WILLIAMS	LL410
	& lab	11:00 hrs/wk	TBA
		M C SIMMONS	KAISER
			SUN

(8 Week Class - Starts 4/07/2008, Ends 5/30/2008)

_____	lec	9:00-2:15	M
		E J WILLIAMS	LL410
	& lec	9:00-2:15	T
		E J WILLIAMS	LL410
	& lab	3:00-10:50	T
		STAFF	KSUNSET
	& lab	3:00-10:50	W
		STAFF	KSUNSET

(8 Week Class - Starts 4/07/2008, Ends 5/30/2008)

NURSING 502B - MEDICAL SURGICAL NURSING I B (CSU) - 4.50 UNITS

Prerequisite: Nursing 506 A & B. Lecture 4.5 hours; Lab 17 hours. (Classes meet the first week on campus)

_____	lec	9:00-12:15	M
		C AZUBUIKE	LL412
	& lec	9:00-11:15	T
		C AZUBUIKE	LL412
	& lab	11:00 hrs/wk	TBA
		C AZUBUIKE	GARDENA

(8 Week Class - Starts 2/4/2008, Ends 4/04/2008)

_____	lec	9:00-12:15	M
		C AZUBUIKE	LL412
	& lec	9:00-11:15	T
		C AZUBUIKE	LL412
	& lab	11:00 hrs/wk	TBA
		T H PUGH	HOSPITAL

(8 Week Class - Starts 2/4/2008, Ends 4/04/2008)

SPRING ■ 2008

SCHEDULE OF CLASSES

NURSING 503A - ADVANCED MEDICAL-SURGICAL NURSING (CSU) - 4.50 UNITS

Prerequisite: Nursing 506 A & B. Lecture 4.5 hours; Lab 17 hours. (Classes meet the first week on campus)

—	lec	9:00-12:15	M
		T H PUGH	LL414
	& lec	9:00-11:15	T
		T H PUGH	LL414
	& lab	11:00 hrs/wk	TBA
		T H PUGH	GARDENA

(8 Week Class - Starts 4/07/2008, Ends 5/30/2008)

—	lec	8:00-1:15	M
		T H PUGH	LL414
	& lec	8:00-1:15	T
		T H PUGH	LL414
	& lab	11:00 hrs/wk	TBA
		C AZUBUIKE	GARDENA

(8 Week Class - Starts 4/07/2008, Ends 5/30/2008)

NURSING 503B - PSYCHIATRIC NURSING B (CSU) - 4.50 UNITS

Prerequisite: Nursing 501B and 526 with a grade of "C" or better. Lecture 4.5 hours; Lab 17 hours. (Classes meet the first week on campus)

—	lec	9:00-12:35	M
		STAFF	LL404
	& lec	9:00-11:15	Th
		J T WILLIAMS	LL404
	& lec	11:00 hrs/wk	TBA
		STAFF	KCMHC

(8 Week Class - Starts 2/4/2008, Ends 4/04/2008)

—	lec	9:00-12:35	M
		STAFF	LL 404
	& lec	9:00-11:15	Th
		STAFF	LL416
	& lab	11:00 hrs/wk	TBA
		NP EZEObAH	KCMHC

(8 Week Class - Starts 4/07/2008, Ends 5/30/2008)

—	lec	9:00-12:35	M
		STAFF	LL404
	& lec	9:00-11:15	Th
		STAFF	LL404
	& lab	3:00-11:30	TW
		N P EZEObAH	KCMHC

(8 Week Class - Starts 2/4/2008, Ends 4/04/2008)

—	lec	9:00-12:35	T
		STAFF	LL404
	& lec	9:00-11:15	Th
		STAFF	LL416
	& lab	3:00-11:30	TW
		N N DAY	HUCLA

(8 Week Class - Starts 4/07/2008, Ends 5/30/2008)

NURSING 506A - MATERNAL AND CHILD HEALTH NURSING A (PEDIATRICS) (CSU) - 4.50 UNITS

Prerequisite: Nursing 502A and 503B with a grade of "C" or better. Lecture 4.5 hours; Lab 17 hours. (Classes meet the first week on campus)

—	lec	9:00-12:35	M
		B F DAWSON	LL416
	& lec	9:00-11:15	Th
		B F DAWSON	LL416
	& lab	11:00 hrs/wk	TBA
		I M GOBBIDON	KAISER SUN

(8 Week Class - Starts 4/07/2008, Ends 5/30/2008)

—	lec	9:00-2:15	M
		B F DAWSON	LL416
	& lec	9:00-2:15	Th
		B F DAWSON	LL416
	& lab	3:00-11:30	TW
		C D FORD CHARLES	HUCLA

(8 Week Class - Starts 4/07/2008, Ends 5/30/2008)

NURSING 506B - MATERNAL AND CHILD HEALTH NURSING B (OBSTETRICS) (CSU) - 4.50 UNITS

Prerequisite: Nursing 502A and 503B with a grade of "C" or better. Lecture 4.5 hours; Lab 17 hours. (Classes meet the first week on campus)

—	lec	8:00-1:15	M
		N P EZEObAH	LL416
	& lec	8:00-1:15	T
		N P EZEObAH	LL416
	& lab	11:00 hrs/wk	TBA
		N J HAYE	GARDENA

(8 Week Class - Starts 2/4/2008, Ends 4/04/2008)

—	lec	8:00-1:15	M
		N P EZEObAH	LL416
	& lec	8:00-1:15	T
		N P EZEObAH	LL416
	& lab	3:00-11:30	WTh
		B G BAKER	KAISER SUN

(8 Week Class - Starts 2/4/2008, Ends 4/04/2008)

NURSING 507 - SENIOR SEMINAR (CSU) - 1 UNIT

Prerequisites: Nursing 502 A & B.

1130	1:00-3:05	F
	C AZUBUIKE	LL414

(8 Week Class - Starts 4/07/2008, Ends 5/30/2008)

NURSING 517 - MATHEMATICS OF DRUGS AND SOLUTIONS (CSU) - 3 UNITS

Prerequisites: None

1131	9:00-12:10	F
	S A HINKLE	LL414

NURSING 523 - PHARMACOLOGY (CSU) - 3 UNITS

Prerequisite: None

1132	2:00-5:10	Th
	J H WILLIAMS	LL414

NURSING 526 - COMMUNICATION IN NURSING (CSU) - 1 UNIT

Prerequisite: 501A and 527. Recommended:

Eligibility/admission to the Nursing Program.

1133	10:00-12:20	M
	S A HINKLE	SS301

(8 Week Class - Starts 4/07/2008, Ends 5/30/2008)

NURSING 527 - NURSING PROCESS (CSU) - 1 UNIT

Recommended: Eligibility/Admission to the Nursing Program

1134	1:00-3:20	M
	N J CARTER	LL105

(8 Week Class - Starts 2/4/2008, Ends 4/04/2008)

PERSONAL DEVELOPMENT

Department Chair: Reginald Morris,
(323) 241-5427, Morrisr@lasc.edu

PERSONAL DEVELOPMENT 1 - INTRODUCTION TO COLLEGE (RPT 1) - 1 UNITS

Prerequisite: None

1805	9:00-12:00	F
	M R WILLIAMS	SS314

(8 Week Class - Starts 2/4/2008, Ends 4/04/2008)

1806	11:10-1:15	F
	M R WILLIAMS	SS314

(8 Week Class - Starts 4/7/2008, Ends 5/30/2008)

PERSONAL DEVELOPMENT 17 - COLLEGE SURVIVAL SKILLS DEVELOPMENT (CSU) - 1 UNIT

Prerequisite: None

1800	11:10-12:10	MW
	M R WILLIAMS	SS314

(8 Week Class - Starts 2/4/2008, Ends 4/04/2008)

PERSONAL DEVELOPMENT 17 (Cont'd)

1801	11:10-12:15	MW
	M R WILLIAMS	SS314

(8 Week Class - Starts 4/7/2008, Ends 5/30/2008)

1802	8:20-9:25	TTh
	T M ALFRED	LL213

(8 Week Class - Starts 2/4/2008, Ends 4/04/2008)

1803	12:30-2:35	T
	I DAZA	SS315

(8 Week Class - Starts 4/7/2008, Ends 5/30/2008)

1804	4:00-6:05	W
	T M ALFRED	SS314

(8 Week Class - Starts 4/7/2008, Ends 5/30/2008)

Evening Classes

4800	4:00-6:05	W
	A J TUCKER	SS314

(8 Week Class - Starts 2/4/2008, Ends 4/04/2008)

4801	6:00-8:05	T
	R D MORRIS	COX306

(8 Week Class - Starts 4/7/2008, Ends 5/30/2008)

PERSONAL DEVELOPMENT 20 - POST SECONDARY EDUCATION: THE SCOPE OF CAREER PLANNING (CSU) - 3 UNITS

Prerequisite: None

1810	8:00-9:25	MW
	I DAZA	SS 314

1811	9:35-11:00	TTh
	M L LEWIS	SS 315

PHILOSOPHY

Department Chair: Patricia Lewis,
(323) 241-5352, Lewispa@lasc.edu

PHILOSOPHY 1 - INTRODUCTION TO PHILOSOPHY (UC:CSU) - 3 UNITS

Prerequisite: None. Recommended: English 101.

0201	8:00-9:25	TTh
	S L PETERS	LL112

0202	8:00-11:10	S
	S L PETERS	LL112

Evening Classes

3031	4:00-5:25	MW
	M A CAVANAUGH	SS314

PHILOSOPHY 8 - DEDUCTIVE LOGIC (UC:CSU) - 3 UNITS

Prerequisite: None. Recommended: English 101.

Evening Classes

3034	6:30-9:40	W
	M A CAVANAUGH	LL118

(Cont'd)

PHYSICAL EDUCATION

Department Chair: Glenn Yoshida,
(323) 241-5296, Yoshidgy@lasc.edu

PHYSICAL EDUCATION 101 - WATER ACTIVITIES - SWIMMING-NON/SWIMMER (UC:CSU) - 1 UNIT

Prerequisite: None

2132 9:30-10:35 TTh
S K COLLINS HEADS PE POOL

Evening Classes

2920 5:00-6:05 TTh
J A VARA PE POOL

PHYSICAL EDUCATION 102 - SWIMMING SKILLS (UC:CSU) - 1 UNIT

Prerequisite: PE 101 or equivalent. (Activity 2 hours)

2135 9:30-10:35 TTh
S K COLLINS HEADS PE POOL

Evening Classes

2922 5:00-6:05 TTh
J A VARA PE POOL

PHYSICAL EDUCATION 131 - AQUA AEROBICS (UC:CSU) - 1 UNIT

Prerequisite: None

Evening Classes

2921 6:15-7:40 TTh
J A VARA PE POOL

PHYSICAL EDUCATION 170 - WALKING FOR FITNESS (UC:CSU) - 1 UNIT

Activity 2 hours

Evening Classes

2134 6:00-7:25 MW
F J GARNETT PE FIELD



PHYSICAL EDUCATION 228 - INDIVIDUAL AND DUAL ACTIVITIES - BODY CONDITIONING (UC:CSU) – 1 UNIT

Prerequisite: None. Activity 2 hours

2112 10:05-11:05 MW
F J GARNETT PEC 211

PHYSICAL EDUCATION 229 - INDIVIDUAL AND DUAL ACTIVITIES - BODY DYNAMICS (UC:CSU) - 1 UNIT

Prerequisite: None

2104 8:15-9:20 TTh
STAFF PEC 214

Evening Classes

2925 5:00-6:05 TTh
A RHODES PEC 214

PHYSICAL EDUCATION 230 - WEIGHT TRAINING SKILLS (UC:CSU) - 1 UNIT

Prerequisite: None

2119 11:10-12:15 MW
H WASHINGTON PEC 211

2120 11:05-12:10 TTh
STAFF PEC 211

Evening Classes

2940 5:00-6:05 MW
STAFF PEC 211

PHYSICAL EDUCATION 304 - BASKETBALL SKILLS (UC:CSU) - 1 UNIT

Prerequisite: None

2105 8:00-9:05 MW
F J GARNETT PE GYM

2107 2:10 hrs/wk TBA
R D MORRIS PE GYM

PHYSICAL EDUCATION 310 - FLAG/TOUCH FOOTBALL SKILLS (UC:CSU) - 1 UNIT

Prerequisite: None.

2130 2:05 hrs/wk TBA
H WASHINGTON PE FIELD

PHYSICAL EDUCATION 434 - BALLET (UC:CSU) - 1 UNIT

Prerequisite: None

Evening Classes

2960 5:00-6:05 TTh
S K COLLINS HEADS PEC 213

PHYSICAL EDUCATION 437 - JAZZ DANCE (UC:CSU) - 1 UNIT

Prerequisite: None

2131 11:10-12:10 MW
S K COLLINS HEADS PEC213

PHYSICAL EDUCATION 515 - INTERCOLLEGIATE SPORTS - TRACK AND FIELD (UC:CSU) - 2 UNITS

Prerequisite: None

2139	10:00 hrs/wk	TBA
	STAFF	PE FIELD

PHYSICAL EDUCATION 552 - ATHLETICS PRE-SEASON CONDITIONING (UC:CSU) - 1 UNIT

Prerequisite: None

2108	3:00 hrs/wk	TBA
	H WASHINGTON	PEC 214

PHYSICAL EDUCATION 668 - BODY DYNAMICS ACTIVITY (UC:CSU) - 1 UNIT

Prerequisite: None

2115	1:15-2:40	MW
	A RHODES	PEC 214
2113	3:10 hrs/wk	TBA
	H WASHINGTON	PEC 214

Evening Classes

2910	6:10-7:35	MW
	STAFF	PEC 214

PHYSICAL EDUCATION (NON-ACTIVITY) 814 - DANCE PRODUCTION (UC:CSU) - 2 UNITS

Prerequisite: None

Evening Classes

2970	6:15-7:40	TTh
	S K COLLINS HEADS	PEC 213

PHYSICAL SCIENCE

Department Chair: Glenn Yoshida,
(323) 241-5296, Yoshidgy@lasc.edu

PHYSICAL SCIENCE 1 - PHYSICAL SCIENCE I (UC:CSU) - 3 UNITS

Prerequisite: None. Recommended: Math 115.

1588	11:10-12:35	MW
	P R DOOSE	LL413

Evening Classes

4570	5:00-6:25	MW
	P R DOOSE	LL413

PHYSICAL SCIENCE 14 - PHYSICAL SCIENCE LABORATORY (UC:CSU) - 1 UNIT

Corequisite: Physical Science 1 or previous enrollment (Lab 2 hours).

Evening Classes

4572	lab 6:30-8:35	T
	R J EAGLE	LL413

PHYSICS

Department Chair: Glenn Yoshida,
(323) 241-5296, Yoshidgy@lasc.edu

PHYSICS 7 - GENERAL PHYSICS II (UC:CSU) - 4 UNITS

Prerequisite: Physics 6 (Lecture 3 hours, Lab, 3 hours).

1583	lec	1:00-2:25	TTh
		B AMOS	TEC360
	& lab	2:30-3:55	TTh
		B AMOS	TEC360

PHYSIOLOGY

Department Chair: Glenn Yoshida,
(323) 241-5296, Yoshidgy@lasc.edu

PHYSIOLOGY 1 - INTRODUCTION TO HUMAN PHYSIOLOGY (UC:CSU) - 4 UNITS

Prerequisite: Biology 3 or Biology 5 (Lecture 3 hours; Lab, 3 hours). Note: This course, when taken with ANATOMY 1, IS THE SAME AS BIOLOGY 20.

1590	lec	8:00-11:10	T
		T J ROBERTS	LL306
	& lab	8:00-11:10	Th
		T J ROBERTS	LL306

Evening Classes

4580	lec	6:30-9:35	W
		J T HAAS	LL105
	& lab	6:30-9:40	M
		I H KORANSKY	LL302
4581	lec	6:30-9:35	W
		J T HAAS	LL105
	& lab	6:30-9:40	M
		P M MAK	LL306

POLITICAL SCIENCE

Department Chair: Sandra Lee,
(323) 241-5224, Lees@lasc.edu

POLITICAL SCIENCE 1 - THE GOVERNMENT OF THE UNITED STATES (UC:CSU) - 3 UNITS

Prerequisite: None

0500	8:00-11:10	S
	D L HORNE	LL103
0501	9:35-11:00	MW
	A A UMOJA	LL310

(Cont'd)

SPRING ■ 2008

SCHEDULE OF CLASSES

POLITICAL SCIENCE 1 (Cont'd)

0502	9:35-11:00	TTh
	AA UMOJA	LL103

Evening Classes

3452	4:30-5:55	MW
	T ROBERTSON	LL113
3453	6:30-9:40	M
	AA UMOJA	LL103
3450	6:30-9:40	T
	J R SCOTT STAFFORD	LL104
3451	6:30-9:40	W
	A SAMAD	LL310

PSYCHOLOGY

Department Chair: Sandra Lee,
(323) 241-5224, Lees@lasc.edu

PSYCHOLOGY 1 - GENERAL PSYCHOLOGY I (UC:CSU) - 3 UNITS

Prerequisite: None

0520	8:00-9:25	TTh
	M EGIPCIACO	LL113
0521	9:35-11:00	MW
	L E APENAHIER	LL113
0522	9:35-11:00	TTh
	L E APENAHIER	LL113
0529	1:00-4:20	MW
	L E APENAHIER	LL113

(8 Week Class - Starts 4/7/2008, Ends 5/30/2008)

Evening Classes

3459	4:30-5:55	MW
	G CRENSHAW	LL114
3460	4:00-5:25	TTh
	S HAYNES-BURTON	LL116
3462	6:30-9:40	M
	G CRENSHAW	LL116

PSYCHOLOGY 2 - GENERAL PSYCHOLOGY II (UC:CSU) - 3 UNITS

Prerequisite: Psychology 1

0526	11:10-12:35	MW
	L E APENAHIER	LL113

Evening Classes

3476	6:30-9:40	T
	G CRENSHAW	LL105

PSYCHOLOGY 11 - CHILD PSYCHOLOGY (UC:CSU) - 3 UNITS

Prerequisite: None

0530	11:10-12:35	TTh
	M EGIPCIACO	LL112

PSYCHOLOGY 14 - ABNORMAL PSYCHOLOGY (UC:CSU) - 3 UNITS

Prerequisite: Psychology 1

Evening Classes

3465	6:30-9:40	W
	E L MILLER	LL111

PSYCHOLOGY 37 - PSYCHOLOGY OF CODEPENDENCY AND FAMILY SYSTEMS (CSU) - 3 UNITS

Prerequisite: None

Evening Classes

3467	6:30-9:40	W
	S HAYNES-BURTON	LL104

PSYCHOLOGY 41 - LIFE-SPAN PSYCHOLOGY: FROM INFANCY TO OLD AGE (UC:CSU) - 3 UNITS

Prerequisite: None

0525	8:00-9:25	MW
	R SNEED	LL213

Evening Classes

3473	6:30-9:40	Th
	S LEE	LL106

PSYCHOLOGY 43 - PRINCIPLES OF GROUP DYNAMICS I (CSU) - 3 UNITS

Prerequisite: None

Evening Classes

3478	6:30-9:40	W
	D L McNAMEE	LL213

PSYCHOLOGY 63 - ALCOHOL/DRUG STUDIES: PREVENTION AND EDUCATION (CSU) - 3 UNITS

Prerequisite: None

Evening Classes

3470	6:30-9:40	T
	L E APENAHIER	LL113

PSYCHOLOGY 64 - INTRODUCTION TO ALCOHOL AND DRUG ABUSE (CSU) - 3 UNITS

Prerequisite: None

Evening Classes

3466	6:30-9:40	W
	STAFF	LL213

**PSYCHOLOGY 65 - CHEMICAL
DEPENDENCY: INTERVENTION,
TREATMENT AND RECOVERY (CSU) -
3 UNITS**

Prerequisite: None

Evening Classes

3468	6:30-9:40	M
	L E APENAHIER	LL113

**PSYCHOLOGY 82 - FIELD WORK II (CSU) -
3 UNITS**

Prerequisite: Psychology 81 (Lecture 1 hour. Lab 5 hours).

Evening Classes

3475	lec	5:15-6:20	M
		D L McNAMEE	LL112
	& lab	5:05 hrs/wk	TBA
		D L McNAMEE	LL112

REAL ESTATE

**Department Chair: Carolyn Magee,
(323) 241-5337,**

Businesslasc@yahoo.com

**REAL ESTATE 1 - REAL ESTATE
PRINCIPLES (CSU) - 3 UNITS**

Prerequisite: None

Evening Classes

3900	6:30-9:50	MW
	M D WILLIAMS	LL218
<i>(8 Week Class - Starts 4/07/2008, Ends 5/30/2008)</i>		
3901	6:30-9:40	TTh
	C A BROWN	OFF SITE

*Consolidated Realty Board, 3725 Don Felipe Dr.,
Los Angeles, CA 90008.*

(8 Week Class - Starts 2/4/2008, Ends 4/04/2008)

**REAL ESTATE 3 - REAL ESTATE
PRACTICES (CSU) - 3 UNITS**

Prerequisite: None

0703	8:00-11:00	S
	STAFF	LL215

**REAL ESTATE 5 - LEGAL ASPECTS OF
REAL ESTATE I (CSU) - 3 UNITS**

Prerequisite: None

Evening Classes

3902	6:30-9:40	TTh
	C M MESA	LL218

(8 Week Class - Starts 4/7/2008, Ends 5/30/2008)

**REAL ESTATE 11 - ESCROW PRINCIPLES
(CSU) - 3 UNITS**

Prerequisite: None

Evening Classes

3904	6:30-9:40	MW
	R BLYTHER	LL218

(8 Week Class - Starts 2/4/2008, Ends 3/30/2008)

**REAL ESTATE 21 - REAL ESTATE
ECONOMICS (CSU) - 3 UNITS**

Prerequisite: None

Evening Classes

3903	6:30-9:40	TTh
	L G BELLAMY	OFF SITE

*Consolidated Realty Board, 3725 Don Felipe Dr.,
Los Angeles, CA 90008.*

(8 Week Class - Starts 4/7/2008, Ends 5/30/2008)

SOCIOLOGY

**Department Chair: Sandra Lee,
(323) 241-5224, Lees@lasc.edu**

**SOCIOLOGY 1 - INTRODUCTION TO
SOCIOLOGY (UC:CSU) - 3 UNITS**

Prerequisite: None

0537	8:00-9:25	MW
	STAFF	LL113
0539	11:10-12:35	TTh
	STAFF	LL104
0540	1:10-2:35	TTh
	STAFF	LL110
0538	3:00-5:15	TTh
	STAFF	LL110

Evening Classes

(12 Week Class - Starts 3/3/2008, Ends 5/30/2008)

6546	5:55-7:30	T
	STAFF	LL110
	&	12:00-3:30
		S
		LL110
	&	2:05 hrs/wk
		TBA
		LL110

(8 Week Class - Starts 2/04/2008, Ends 4/04/2008)

3471	6:30-9:40	M
	R RHYMES	LL403
3472	6:30-9:40	Th
	STAFF	LL116

SPRING ■ 2008

SCHEDULE OF CLASSES

SOCIOLOGY 2 - AMERICAN SOCIAL PROBLEMS (UC:CSU) - 3 UNITS

Prerequisite: None

0535	8:00-9:25	MW
	STAFF	LL118

SOCIOLOGY 12 - MARRIAGE AND FAMILY LIFE (CSU) - 3 UNITS

Prerequisite: None

Evening Classes

3442	6:30-9:40	T
	STAFF	SS301

SOCIOLOGY 19 - INTRODUCTION TO THE SOCIAL SERVICES (CSU) - 3 UNITS

Prerequisite: None

Evening Classes

3439	6:30-9:40	W
	TS COLBERT	TEC111

SPANISH

Department Chair: Dr. Sharon Maselli,
(323) 241-5219, Masellsa@lasc.edu

SPANISH 1 - ELEMENTARY SPANISH I (UC:CSU) - 5 UNITS

Prerequisite: None

0961	9:35-10:45	MTWTh
	AC PERSAUD	LL218
0962	1:10-3:40	MW
	C PEREZ	LL110

Evening Classes

4040	4:00-6:30	TTh
	D URIBE-MARTINEZ	LL203
4041	6:30-9:00	MW
	GD CHIAPPELLI	LL312
4042	6:30-9:00	TTh
	G SUN	SS314

SPANISH 2 - ELEMENTARY SPANISH II (UC:CSU) - 5 UNITS

Prerequisite: Spanish 1

0963	8:15-9:25	MTWTh
	AC PERSAUD	LL218

Evening Classes

4043	6:30-9:00	MW
	A VELEZ	LL112

SPANISH 3 - INTERMEDIATE SPANISH I (UC:CSU) - 5 UNITS

Prerequisite: Spanish 2

8300	11:10-12:20	MTWTh
	AC PERSAUD	LL218

Evening Classes

5220	6:30-9:00	MW
	C POBLET	LL106

SPANISH 4 - INTERMEDIATE SPANISH II (UC:CSU) - 5 UNITS

Prerequisite: Spanish 3

8301	11:10-12:20	MTWTh
	AC PERSAUD	LL218

Evening Classes

5221	6:30-9:00	MW
	C POBLET	LL106

SPANISH 14 - SPANISH FOR PUBLIC SERVICE PERSONNEL (CSU) - 3 UNITS

Prerequisite: None

Evening Classes

0965	8:00-11:00	M
	MA LOERA	TEC121

SPANISH 44 - BILINGUAL ORAL AND WRITTEN EXPRESSION (UC:CSU) - 5 UNITS

Prerequisite: None

0964	9:35-12:05	MW
	STAFF	LL215

SPEECH

Department Chair: Patricia Lewis,
(323) 241-5352, Lewispa@lasc.edu

SPEECH 65 - COMMUNICATION SKILLS NDA - 3 UNITS

Prerequisite: None

0254	1:00-2:25	MW
	STAFF	LL118

SPEECH 101 - ORAL COMMUNICATION I (UC:CSU) - 3 UNITS

Prerequisite: None

0251	9:35-11:00	TTh
	PA LEWIS	LL118
8009	9:35-11:00	TTh
	PA LEWIS	LL118
0253	11:10-12:35	TTh
	A LEWIS	LL118

(Cont'd)

SPEECH 101 (Cont'd)

Evening Classes

3041	6:30-9:40	M
	PA LEWIS	LL118
3042	6:30-9:40	W
	HL MCLEOD	LL103
3043	6:30-9:40	Th
	KD DOTSON	LL103

SPEECH 161 – SPEECH AND LANGUAGE DEVELOPMENT (CSU) - 3 UNITS

Prerequisite: None

Evening Classes

3045	6:30-9:40	T
	PA LEWIS	LL118

SUPERVISED LEARNING ASSISTANCE BASIC SKILLS/TUTORING

Department Chair: Phyllis Norwood,
(323) 241-5477, Norwoopk@lasc.edu

SUPERVISED LEARNING 1 - SUPERVISED LEARNING ASSISTANCE (NDA) - 0 UNITS

Prerequisite: None (Lab 20 hours). This course is intended to help students achieve course objectives in the course for which tutoring is recommended. It also helps students to improve learning and study skills through tutoring outside of class time.

8950	20:00 hrs/wk	TBA
	A CHUKUMERIJE	LRC 3RD FLOOR
8951	20:00 hrs/wk	TBA
	S V DILLON	LRC 3RD FLOOR
8952	20:00 hrs/wk	TBA
	C L MAGEE	LL206
8953	20:00 hrs/wk	TBA
	M L RUANE	TEC340
8964	20:00 hrs/wk	TBA
	E HECTOR	TEC185
8955	20:00 hrs/wk	TBA
	S V DILLON	LRC 3RD FLOOR
8956	20:00 hrs/wk	TBA
	S LEE	LL333
8957	20:00 hrs/wk	TBA
	M L RUANE	SS116

SUPERVISION

Department Chair: Carolyn Magee,
(323) 241-5337,
Businesslasc@yahoo.com

SUPERVISION 4 - SUPERVISOR'S RESPONSIBILITY FOR MANAGEMENT OF PERSONNEL (CSU) - 3 UNITS

Prerequisite: None

Evening Classes

3905	6:30-9:40	TTh
	J C ROLLINS	OFF SITE

True Friendship BC, 7901 S. Van Ness Ave, Inglewood, CA 90305.

(8 Week Class - Starts 2/4/2008, Ends 4/4/2008)

THEATER

Department Chair: Patricia Lewis,
(323) 241-5352, Lewispa@lasc.edu

THEATER 100 - INTRODUCTION TO THE THEATER (UC:CSU) - 3 UNITS

Prerequisite: None

0275	1:15-2:45	MW
	K A HARRINGTON	LL108

THEATER 233 - PLAY PRODUCTION (UC:CSU) - 3 UNITS

Prerequisite: None (Lab 9 hours)

0278	lec	1:10-2:35	MTWTh
	& lab	6:00 hrs/wk	LL312
		A COWART	TBA
		A COWART	LL312

THEATER 240 - VOICE AND ARTICULATION FOR THE THEATER (UC:CSU) - 3 UNITS

Prerequisite: None

0276	9:35-11:00	MW
	A COWART	LL312

THEATER 270 - BEGINNING ACTING (UC:CSU) - 3 UNITS

Prerequisite: None

0274	11:10-12:35	MW
	A COWART	LL312
	G R NICHOLS	COX303